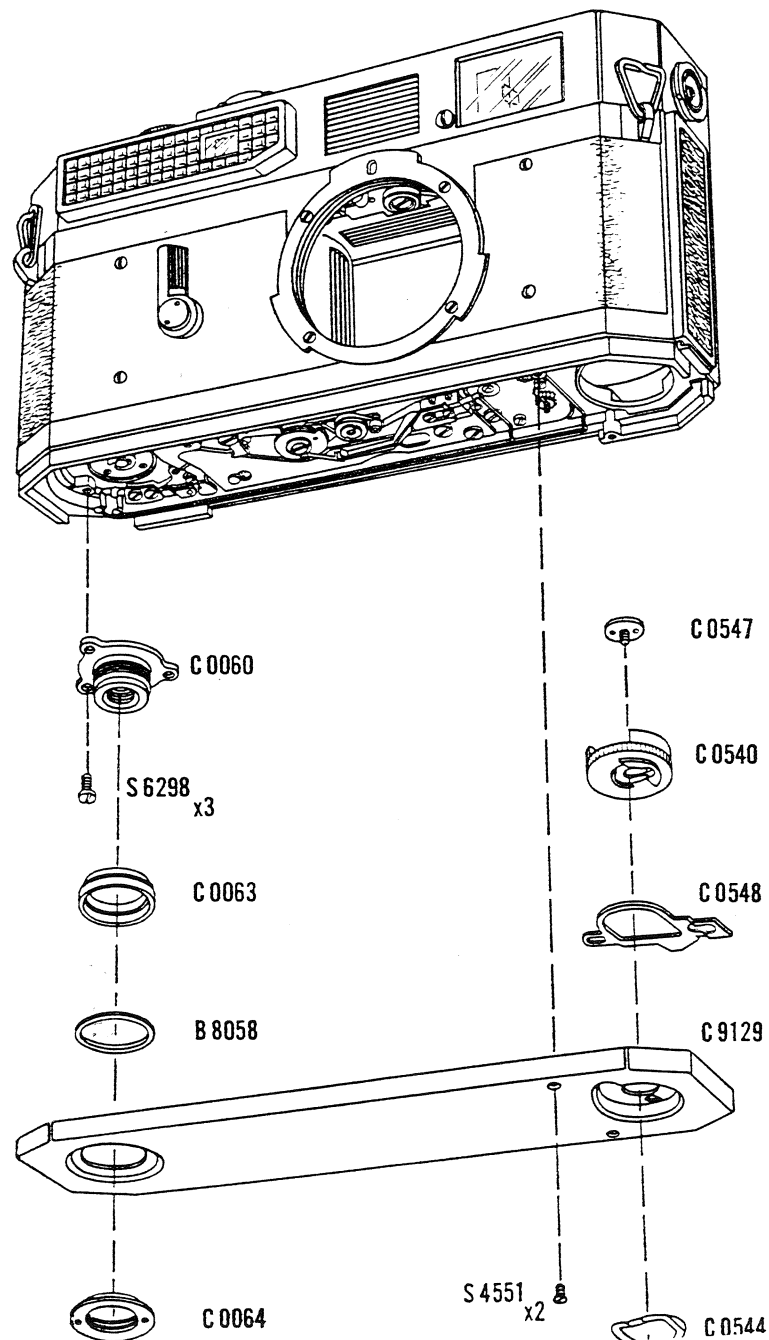


THE CANON REPAIR MANUAL

CANON CAMERA MODEL 7



THE CANON REPAIR MANUAL

CANON CAMERA MODEL 7

(REFERENCE NO. C-10601)

CANON CAMERA COMPANY, INC.

TOKYO, JAPAN

First Edition, August 1961

Second Edition, Entirely revised and re-set, February 1962

HOW TO USE

COMPOSITION: This Repair Manual consist of the EXPLODED VIEWS and PARTS LISTS of various portions of Canon Camera Model 7, INDEX OF PART NUMBERS, REPAIR GUIDES and PRICE LIST OF RPAIR PARTS.

TABLE OF CONTENTS: The nomenclature of each portion of the camera is shown on the table of contents. For example, when you want to see the parts of the shutter button, find out the SHUTTER BUTTON on the table of contents and then see the page indicated.

When a portion cannot be disassembled in one procedure, it is shown in two or more divided Parts, in which case (PART 1), (PART 2) and so on, are indicated on the table of contents.

EXPLODED VIEW: This is the revised edition of our former Service Manual. Parts shown in an exploded view are listed on its right page. The exploded views are arranged according to the correct procedure of disassembling the Canon Camera Model 7, but you need not always follow this order exactly as it is when you remove a certain part.

UNDERLINED PARTS: Part numbers of the parts which cannot easily be exchanged or repaired are underlined, which indicates that the part cannot be supplied as a repair part. Therefore, the underlined parts are not listed on the parts lists and price list of repair parts.

When you need one of these underlined parts, please order its assembled portion or its component parts further broken down, consulting the exploded view carefully.

INDEX OF PART NUMBERS: When you want to identify a part from its part number, see the index of part numbers. Part numbers on the index, parts list and price list are arranged in numerical order, according to the following classification.

CU, SM, C9000s', C, B, E, G, S, W, Y and YS

ORDERING REPAIR PARTS: When ordering parts, please be sure to place an order with
EXPORT DEPARTMENT,
CANON CAMERA COMPANY, INC.,
312 Shimomaruko-Cho Ohta-Ku
Tokyo, Japan,

filling in the printed form, the REQUISITION OF REPAIR PARTS (Exp-3).

PARTS LIST: The explanatory notes regarding the parts list are as follows.

1. When a single part number is used to denote a semi-assembly of parts, such a number as CU 015

is shown on the EXPLODED VIEW. Such a part is, in case it is possible, further broken down in the indented column following it.

e.g. CU 015	Flash Contact (Unit)
C 9034	Flash Contact (B.P.)
C 9035	Flash Contact (B.P.)
C 9037	X Contact (B.P.)
C 0633	Insulator Base
C 0635	Lug
C 0636	Lug
S 2213	Screw×4

2. When more than one piece of an identical part is used in a portion of the product, we indicate by multiplying its part number by the quantity.

e.g. B 1186 Screw×2

3. When parts belonging to the same portion are shown in different charts, we indicate the corresponding page numbers as per the nomenclature of the portion.

e.g. SELF-TIMER (cf. p. 7) in page 2 means that the parts of the self-timer are also shown on page 7.

4. When part numbers are shown in square brackets as in

(B 8058) Washer
(B 8059)
(B 8123)
(B 8124)

choose the suitable one of these parts. Most cases, the difference is in diopter of the eyepiece, in thickness of the washer or in diameter of the tripod socket.

5. When a part is multiplied by N, which means the indefinite number of parts, as in

B 8058 Washer×N,

use suitable number of the part.

6. (B.P.) is the abbreviation of (Bonding Part).

REPAIR GUIDES: The explanation of the repair guides is as follows.

1. How to take necessary steps to remedy troubles of Canon 7 is explained.
2. The camera is classified according to each mechanism and the way to repair is explained for troubles mentioned.
3. As the page number of the Repair Manual which shows the parts related to each repair is given at the end of each remedy, repair or adjust seeing the indicated page for reference.
4. Some pictures of the special repair tools for Canon 7 are given at the end of the Repair Guides.

TABLE OF CONTENTS

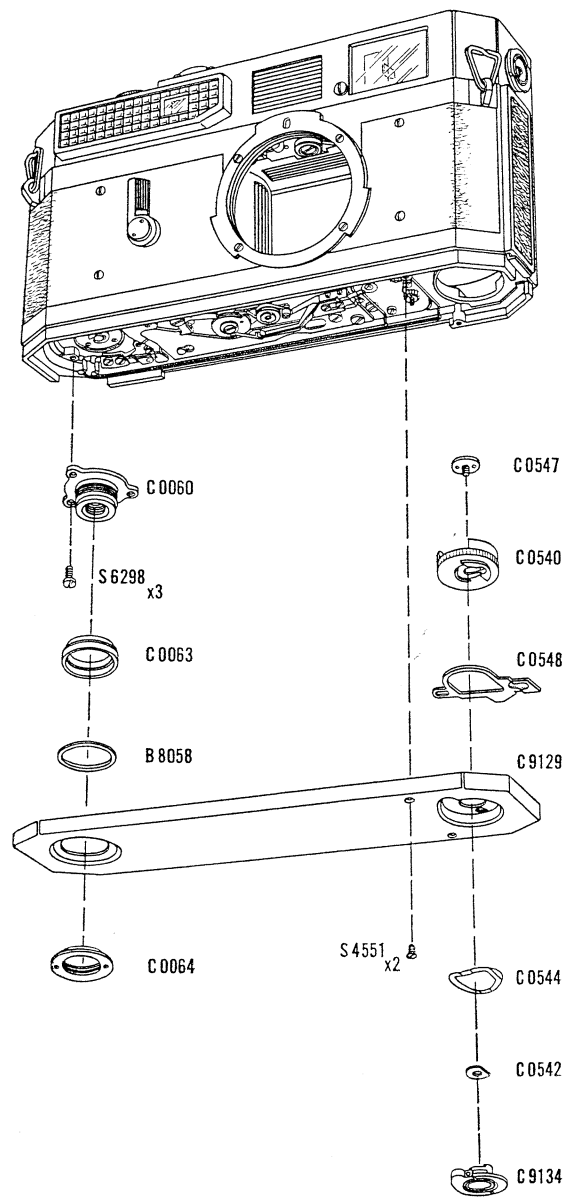
REPAIR MANUAL

	Page
BASE PLATE	1
LENS MOUNTING FLANGE	2
FRONT & BACK COVER	2, 4
SELF-TIMER	2, 7
BACK COVER.....	3
FRONT COVER	4
WINDING LEVER	5
SHUTTER BUTTON	5, 10
SHUTTER SPEED DIAL	5
FLASH TERMINAL	5
REWIND CRANK	5, 10
TOP COVER & EXPOSURE SETTING MECHANISM.....	5, 6
RANGE-VIEWFINDER OPTICAL SYSTEM (PART 1)	5
LIGHT METER	6
EXPOSURE COUNTER	7, 10
SHUTTER SPEED SELECTOR.....	7, 8
RANGE-VIEWFINDER OPTICAL SYSTEM (PART 2)	7, 9
BASE PLATE FOR WINDING MECHANISM	8
SLOW SHUTTER GOVERNOR	10
IDLE GEAR.....	10
SPROCKET	10, 13
FLASH CIRCUIT CONTACT	10
SHUTTER MECHANISM (PART 1).....	10
SHUTTER MECHANISM (PART 2).....	11, 12
LEAD WIRE	11
BODY CASE	13
SHUTTER MECHANISM (PART 3).....	13
WINDING SHAFT & TAKE-UP SPOOL	13
SOME BASIC PARTS.....	13
INDEX OF PART NUMBERS	

REPAIR GUIDES

PRICE LIST OF REPAIR PARTS

EXPLODED VIEW
of
CANON CAMERA MODEL 7

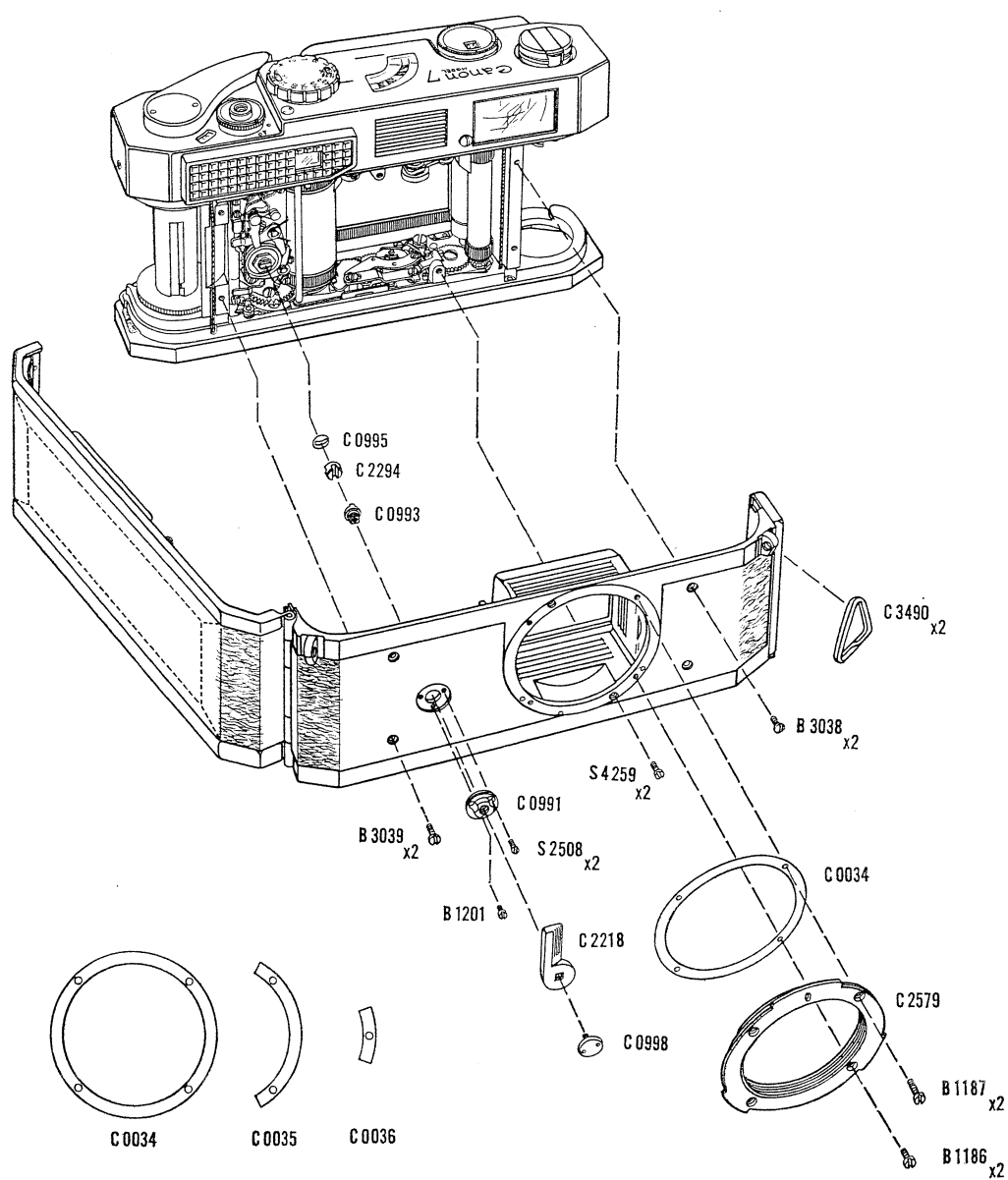


PARTS LIST

BASE PLATE SET

C 9129	Base Plate (B.P.)
C 9134	Magazine Opening Key (B.P.)
C 0060	Tripod Socket (1/4")
C 0061	Tripod Socket (3/8")
C 0063	Base Plate Positioning Ring
C 0064	Pin Face Collar
C 0540	Magazine Opening Disc
C 0542	Washer
C 0544	Spring Washer
C 0547	Pin Face Screw
C 0548	Safety Plate
B 8058	Washer×N
B 8059	
B 8123	
B 8124	
S 4551	Screw×2
S 6298	Screw×3

EXPLODED VIEW
of
CANON CAMERA MODEL 7



PARTS LIST

FRONT & BACK COVER (cf. p. 4)

C 3490	Neck Strap Adapter×2
B 3038	Screw×2
B 3039	Screw×2
S 4259	Screw×2

The Front & Back Cover (Unit) is always supplied in the form of SM0304, as is shown in P. 4.

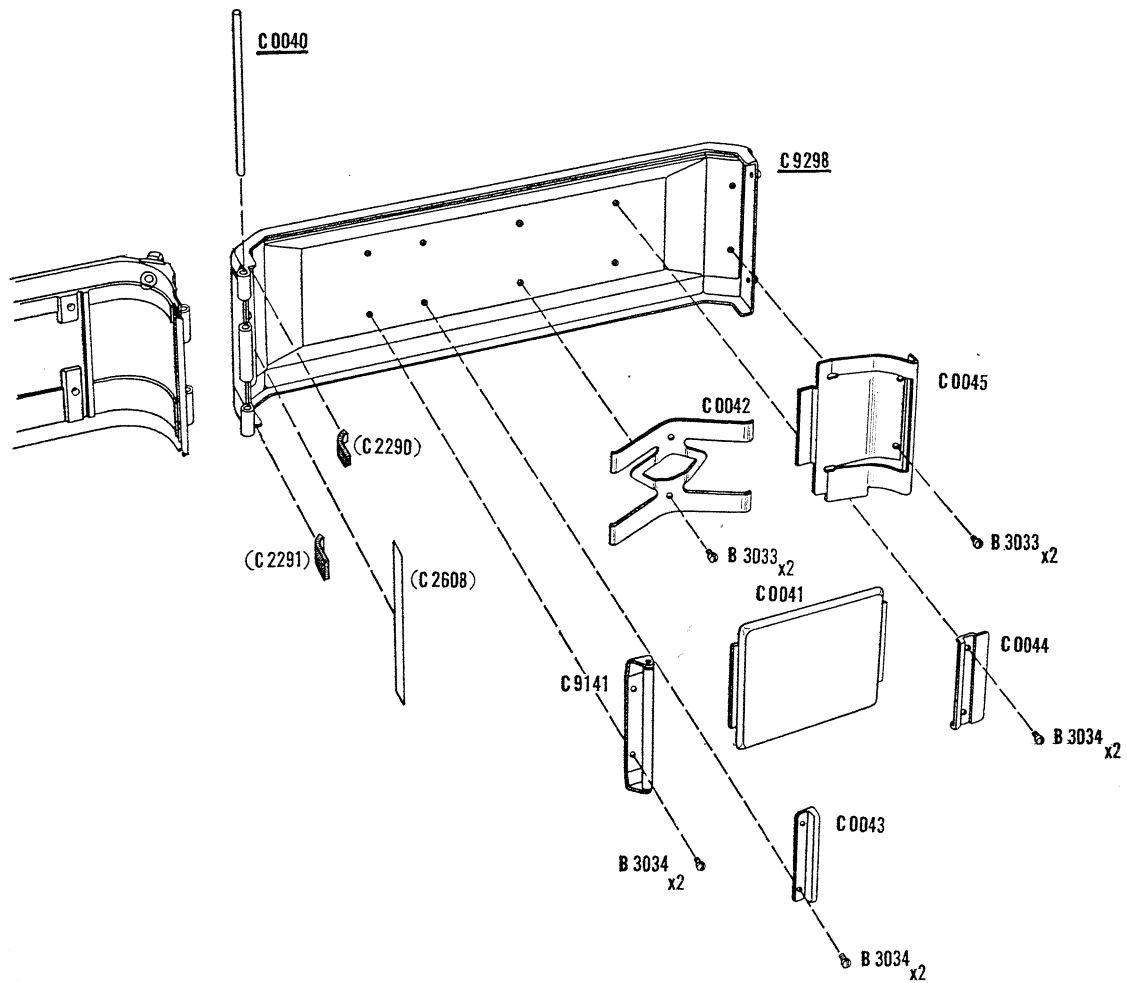
SELF-TIMER LEVER SET

C 0991	Bearing
C 0993	Coupling Joint
C 0995	Spring Washer
C 0998	Pin Face Screw
C 2218	Self-Timer Lever
C 2294	Coupling Joint
B 1201	Screw
S 2508	Screw×2

LENS MOUNTING FLANGE SET

C 0034 (0.1)	Adjusting Washer×N
C 0034 (0.07)	
C 0034 (0.05)	Such numbers as (0.1), (0.07) and (0.05) indicate the thickness of Adjusting Washers. (unit: mm)
C 0034 (0.03)	
C 0035 (0.1)	
C 0035 (0.07)	
C 0035 (0.05)	
C 0035 (0.03)	
C 0036 (0.1)	
C 0036 (0.07)	
C 0036 (0.05)	
C 0036 (0.03)	
C 2579	Lens Mounting Flange
B 1186	Screw×2
B 1187	Screw×2

EXPLODED VIEW
of
CANON CAMERA MODEL 7



PARTS LIST

BACK COVER

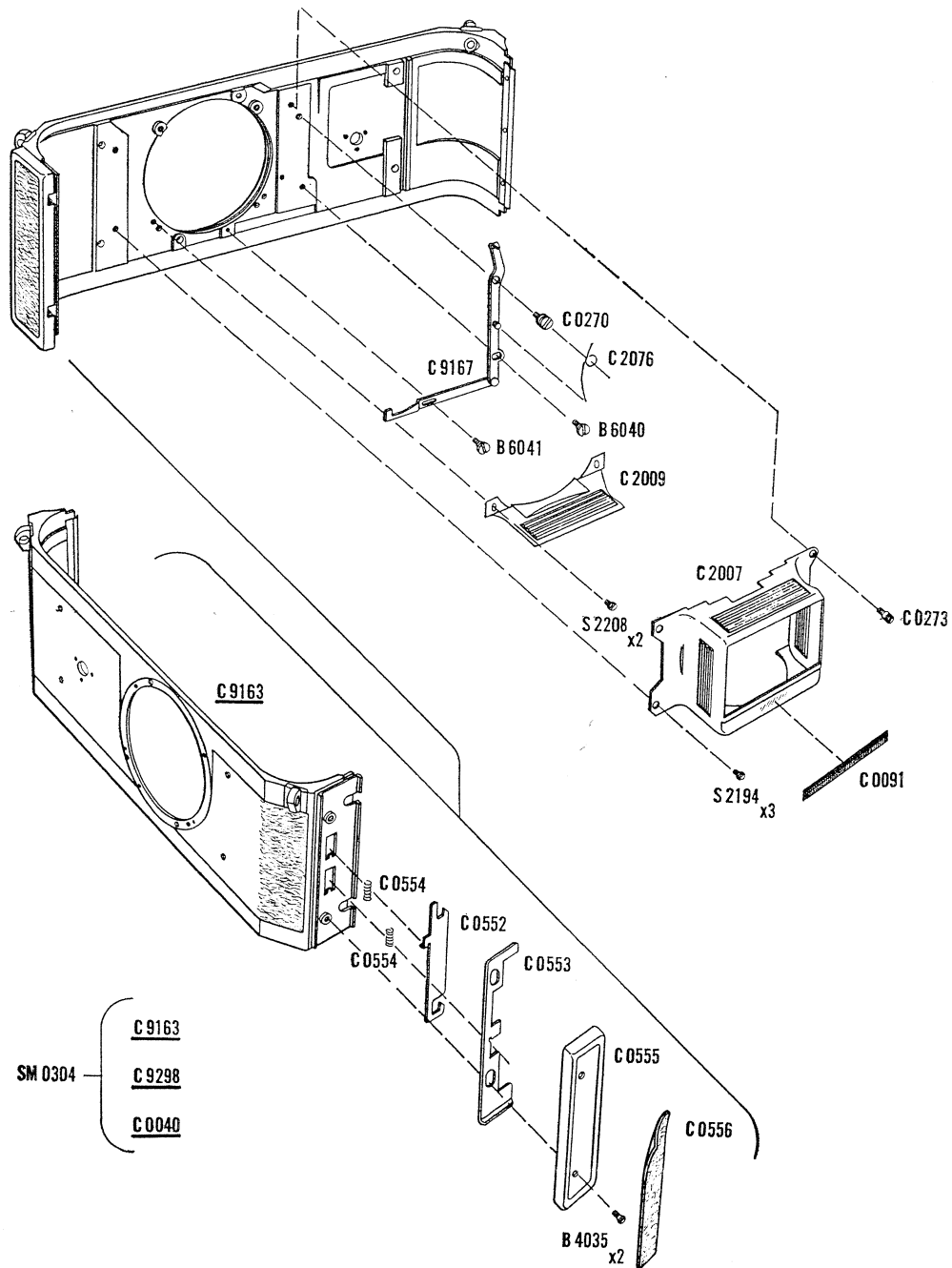
C 9141	Anti-Curl Roller (B.P.)
C 0041	Pressure Plate
C 0042	Spring of Pressure Plate
C 0043	Pressure Plate Holder
C 0044	Pressure Plate Holder
C 0045	Cassette Holder
B 3033	Screw×4
B 3034	Screw×6

The following three parts are not the regular parts but they can be supplied if they are especially needed.

(C 2290)	Light Shield
(C 2291)	Light Shield
(C 2608)	Light Shield

The Back Cover is always supplied in the form of SM0304 Front & Back Cover (Unit), as is shown in P. 4.

EXPLODED VIEW
of
CANON CAMERA MODEL 7



PARTS LIST

FRONT COVER

C 9167	Slow Speed Selecting Link (B.P.)
C 0091	Light Shield
C 0270	Shaft Screw
C 0273	Screw
C 0552	Hook
C 0553	Lock of Back Cover
C 0554	Coil Spring×2
C 0555	Cover Plate
C 0556	Leather
C 2007	Light Shield
C 2009	Light Shield
C 2076	Spring
B 4035	Screw×2
B 6040	Screw
B 6041	Screw
S 2194	Screw×3
S 2208	Screw×2

The Front Cover is always supplied in the form of SM0304 Front & Back Cover (Unit).

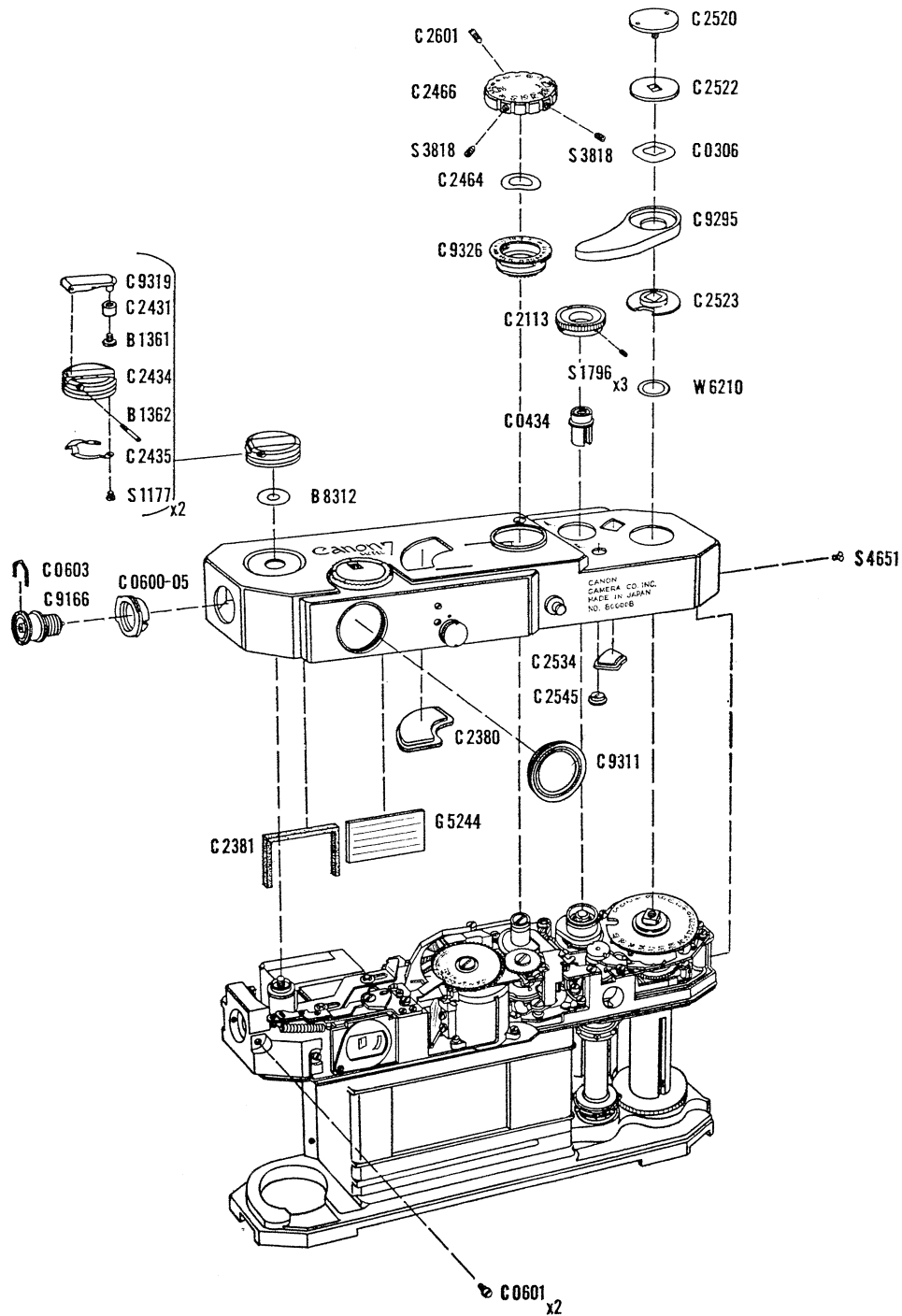
FRONT & BACK COVER (cf. p. 2)

SM 0304 Front & Back Cover (Unit)

It is always supplied as the assembly of following three underlined parts.

<u>C 9163</u>	Front Cover (B.P.)
<u>C 9298</u>	Back Cover (B.P.)
<u>C 0040</u>	Shaft of Hinge

EXPLODED VIEW
of
CANON CAMERA MODEL 7



PARTS LIST

WINDING LEVER SET

C 9295	Winding Lever (B.P.)
C 0306	Spring Washer
C 2520	Pin Face Screw
C 2522	Washer
C 2523	Shaft of Winding Lever
W 6210	Washer×N
W 6211	

SHUTTER BUTTON (cf. p. 10)

C 0434	Shutter Button
C 2113	Film Rewind Ring
S 1796	Screw×3

SHUTTER SPEED DIAL SET

C 9326	Film Speed Dial (B.P.)
C 2464	Spring Washer
C 2466	Shutter Speed Dial
C 2601	Screw
S 3818	Screw×2

FLASH TERMINAL SET

C 9166	Flash Terminal (B.P.)
C 0600-05	Flash Unit Bayonet
C 0601	Screw×2
C 0603	Spring

REWIND CRANK SET

C 9319	Rewind Crank (B.P.)
C 2431	Rewind Knob
C 2434	Rewind Knuckle
C 2435	Spring
B 1361	Screw
B 1362	Shaft Screw
B 8312	Washer×N
S 1177	Screw×2

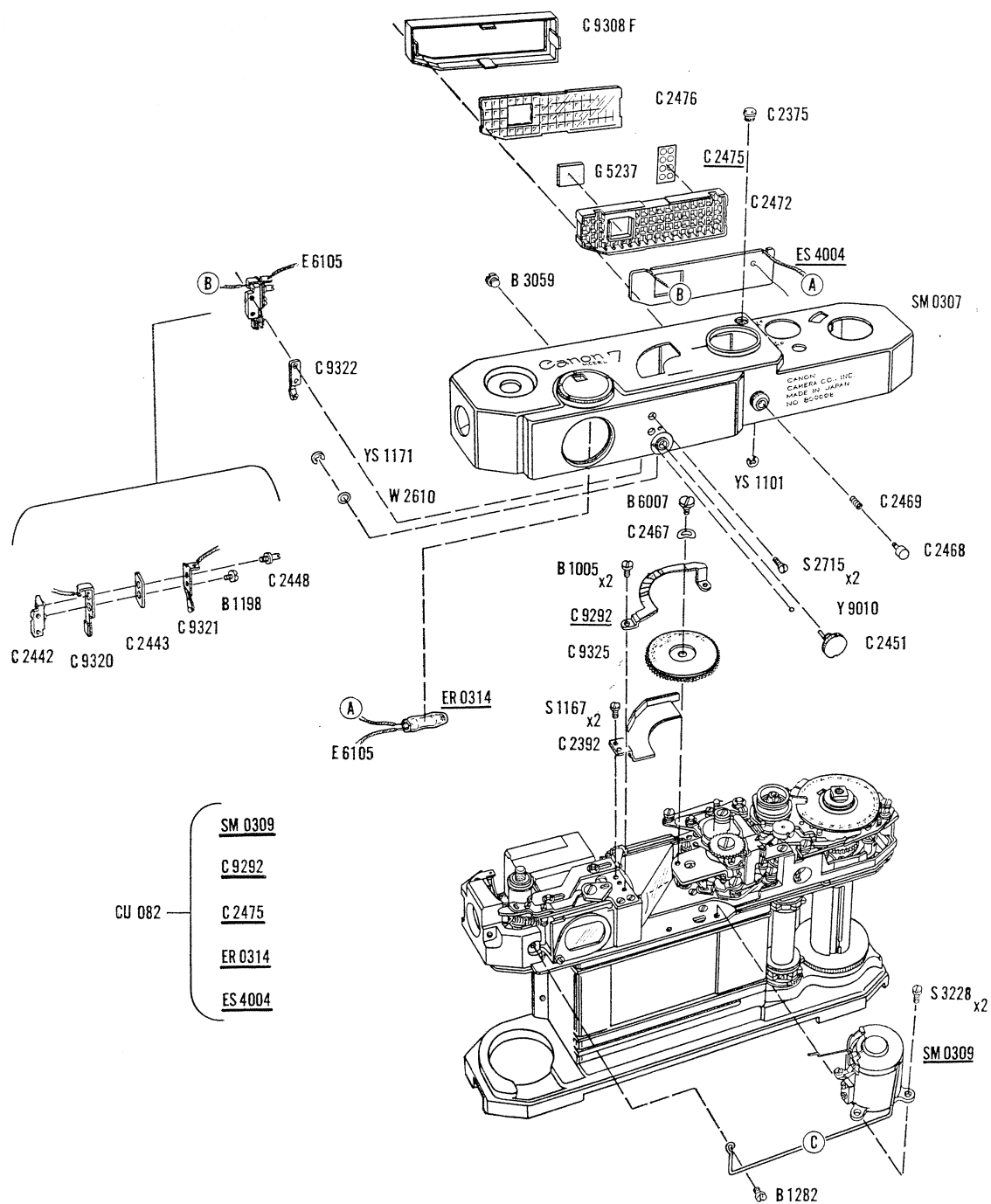
TOP COVER & EXPOSURE SETTING
MECHANISM (cf. p. 6)

C 2380	Light Meter Indicator Window
C 2381	Light Shield
C 2534	Exposure Counter Window
C 2545	Film Transport Indicator Window
S 4651	Screw

RANGE-VIEWFINDER OPTICAL SYSTEM
(PART 1)

C 9311 (0)	Eyepiece (B.P.)
C 9311 (+1.5)	Such numbers as (0), (+1.5),
C 9311 (-1)	(-1) and (-2.5) show the
C 9311 (-2.5)	dioptr of the eyepiece.
G 5244	Illuminating Window

EXPLODED VIEW
of
CANON CAMERA MODEL 7



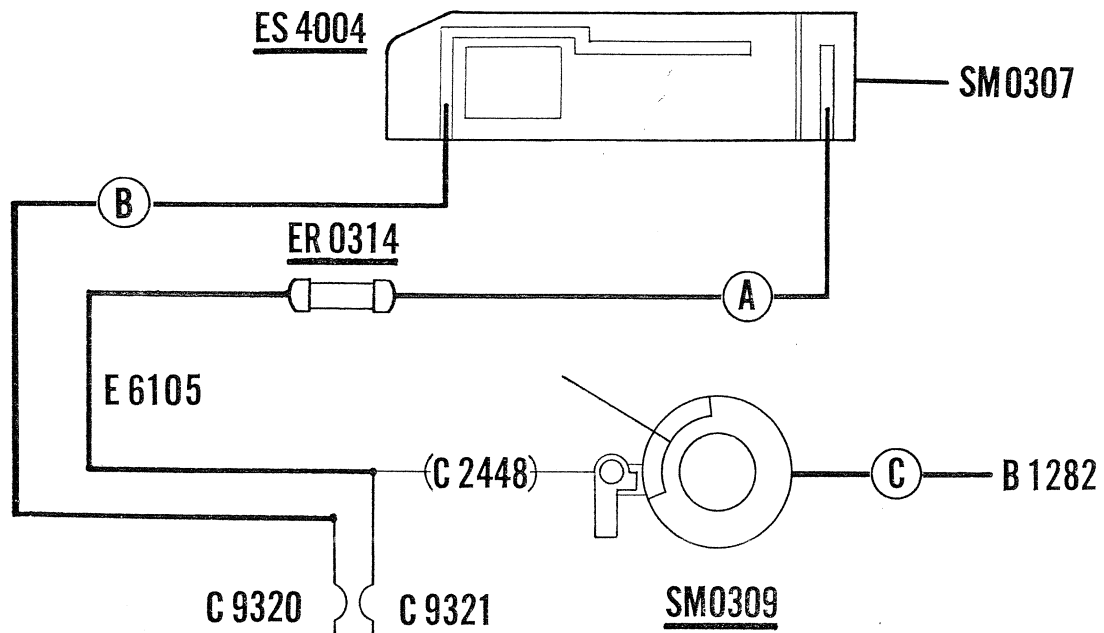
PARTS LIST

TOP COVER & EXPOSURE SETTING
MECHANISM (cf. p. 5)

SM 0307	Top Cover (B.P.)
C 9320	Contact (B.P.)
C 9321	Contact (B.P.)
C 9322	Click Spring (B.P.)
C 2375	Pin Face Screw
C 2442	Insulator Base
C 2443	Insulator
C 2448	Screw
C 2451	Light Meter Sensitivity Shifting Knob
C 2468	Film Speed Indicator Button
C 2469	Coil Spring
B 1198	Screw
B 3059	Screw
S 2715	Screw×2
W 2610	Washer×N
W 2611	
W 2612	
Y 9010	Steel Ball
YS 1101	Retaining Washer
YS 1171	Retaining Washer

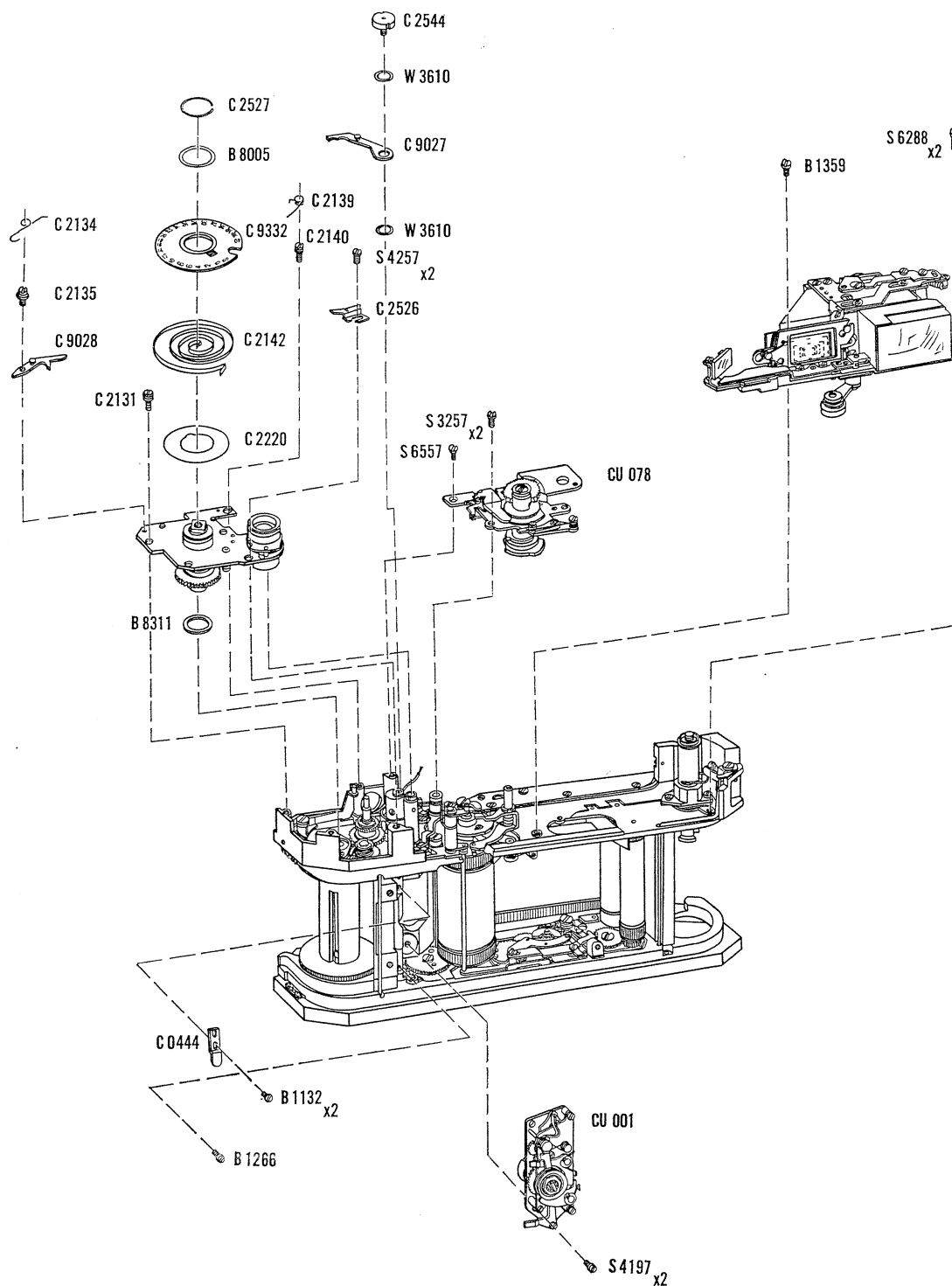
LIGHT METER

CU 082	Light Meter (Unit)
It is always supplied as the combination of following five underlined parts.	
<u>SM 0309</u>	Galvanometer (Unit)
<u>C 9292</u>	Light Meter Indicator (B.P.)
<u>C 2475</u>	Mask
<u>ER 0314</u>	Resistor
<u>ES 4004</u>	Photoelectric Cell
C 9308F	Photoelectric Cell Holder (B.P.)
C 9325	Light Meter Dial (B.P.)
C 2392	Light Shield
C 2467	Spring Washer
C 2472	Lattice Window Frame
C 2476	Light Meter Window
B 1005	Screw×2
B 1282	Screw
B 6007	Screw
E 6105	Lead Wire (75 mm long)
G 5237	Range-Viewfinder Window
S 1167	Screw×2
S 3228	Screw×2



THE CIRCUIT DIAGRAM OF LIGHT METER

EXPLODED VIEW
of
CANON CAMERA MODEL 7



PARTS LIST

SELF-TIMER SET

CU 001	Self-Timer (Unit)
C 0444	Self-Timer Starting Knock
B 1132	Screw×2
(B 1266)	Stopper
(B 1267)	
(B 1268)	
S 4197	Screw×2

EXPOSURE COUNTER (cf. p. 10)

C 9027	Feeding Claw (B.P.)
C 9028	Stopper Claw (B.P.)
C 9332	Exposure Counter Dial (B.P.)
C 2131	Screw
C 2134	Spring
C 2135	Screw
C 2139	Spring
C 2140	Screw
C 2142	Spring
C 2220	Washer
C 2526	Exposure Counter Index
C 2527	Retainer
C 2544	Film Transport Indicator
(B 8005)	Washer
(B 8006)	
B 8311	Washer×N
S 4257	Screw×2
(W 3610)	Washer×2
(W 3611)	
(W 3612)	

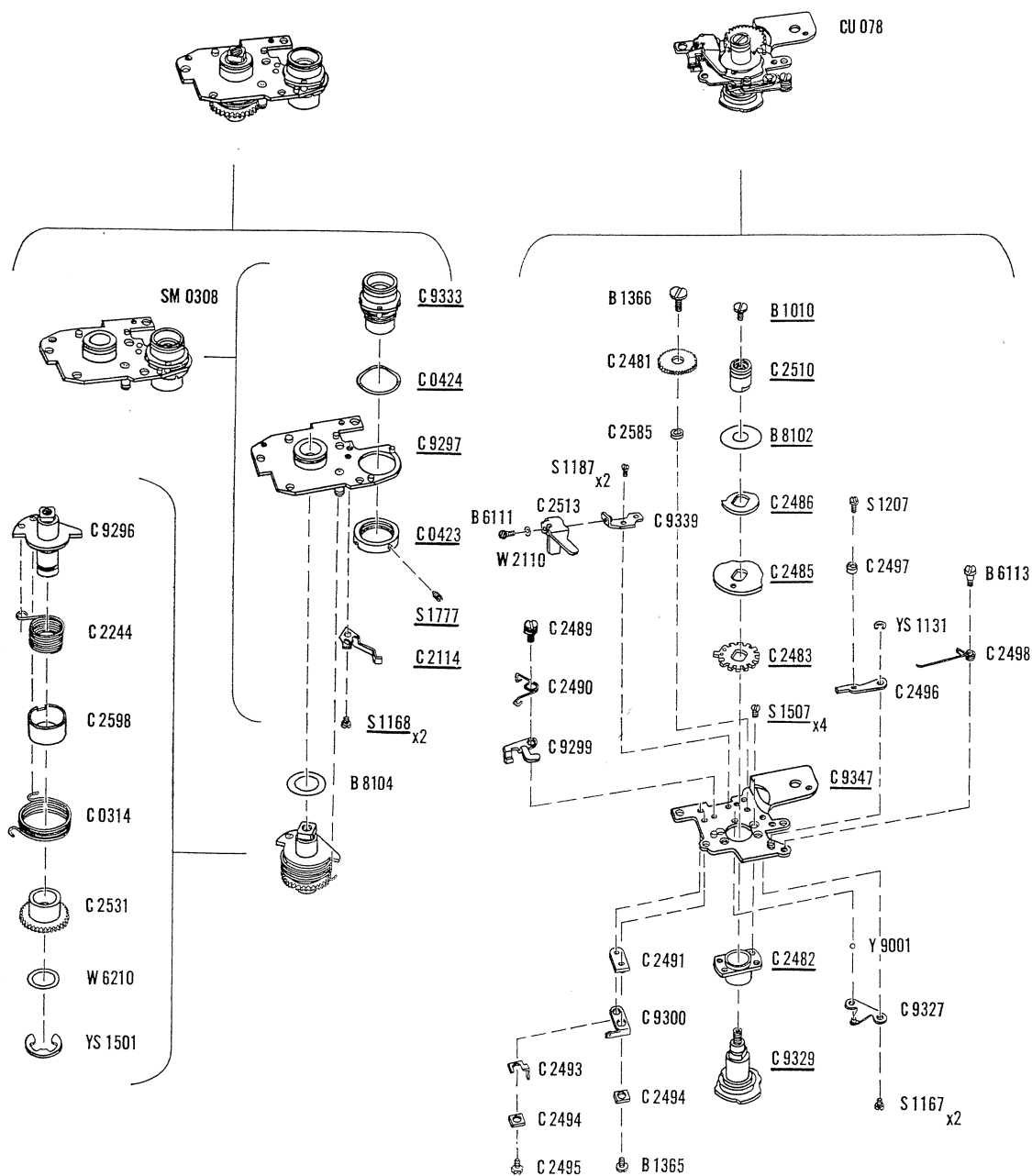
SHUTTER SPEED SELECTOR (cf. p. 8)

CU 078	Shutter Speed Selector (Unit)
S 3257	Screw×2
S 6557	Screw

RANGE-VIEWFINDER OPTICAL SYSTEM (PART 2) (cf. p. 9)

B 1359	Screw
S 6288	Screw×2

EXPLODED VIEW
of
CANON CAMERA MODEL 7



PARTS LIST

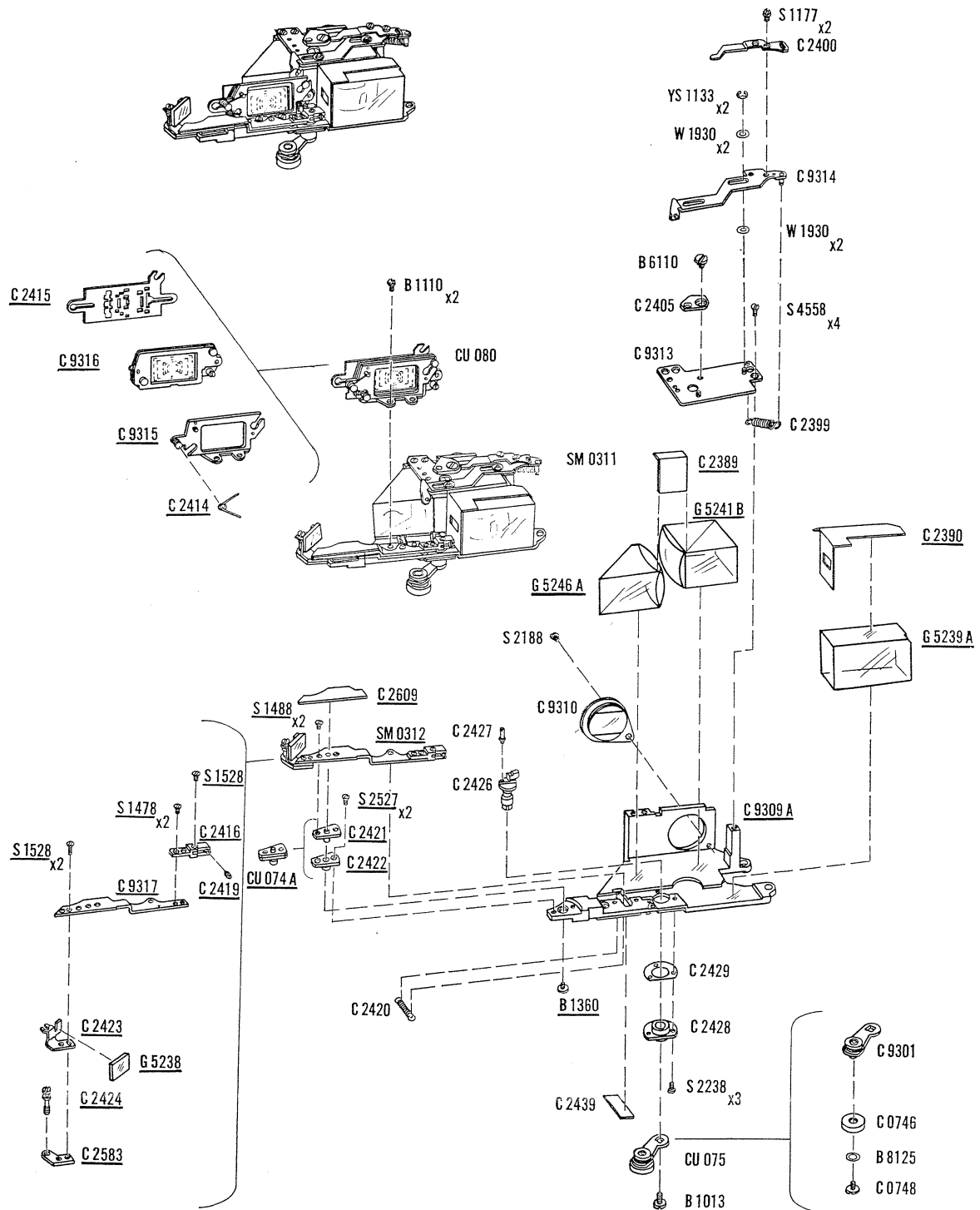
BASE PLATE FOR WINDING MECHANISM

SM 0308	Base Plate for Winding Mechanism (Unit)
C 9296	Winding Device Shaft (B.P.)
C 0314	Coil Spring
C 2244	Coil Spring
C 2531	Gear
C 2598	Spring Cover
(B 8104)	Washer
(B 8105)	
(B 8106)	
(W 6210)	Washer
(W 6211)	
(W 6212)	
(W 6213)	
YS 1501	Retaining Washer

SHUTTER SPEED SELECTOR (cf. p. 7)

CU 078	Shutter Speed Selector (Unit)
C 9299	Contact (B.P.)
C 9300	Contact (B.P.)
C 9327	Click Spring (B.P.)
C 9339	Clutch Lever Holder (B.P.)
C 2481	Gear
C 2489	Screw
C 2490	Spring
C 2491	Insulator
C 2493	Contact
C 2494	Insulator×2
C 2495	Screw
(C 2496)	Slow Speed Selecting Lever
(C 9417)	Slow Speed Selecting Lever(B.P.)
C 2497	Eccentric Collar
C 2498	Spring
C 2513	Clutch Lever
C 2585	Collar
(B 1365)	Screw
(B 1286)	
B 1366	Screw
B 6111	Screw
B 6113	Screw
S 1167	Screw×2
S 1187	Screw×2
S 1207	Screw
(W 2110)	Washer
(W 2111)	
(W 2112)	
Y 9001	Steel Ball
YS 1131	Retaining Washer

EXPLODED VIEW
of
CANON CAMERA MODEL 7

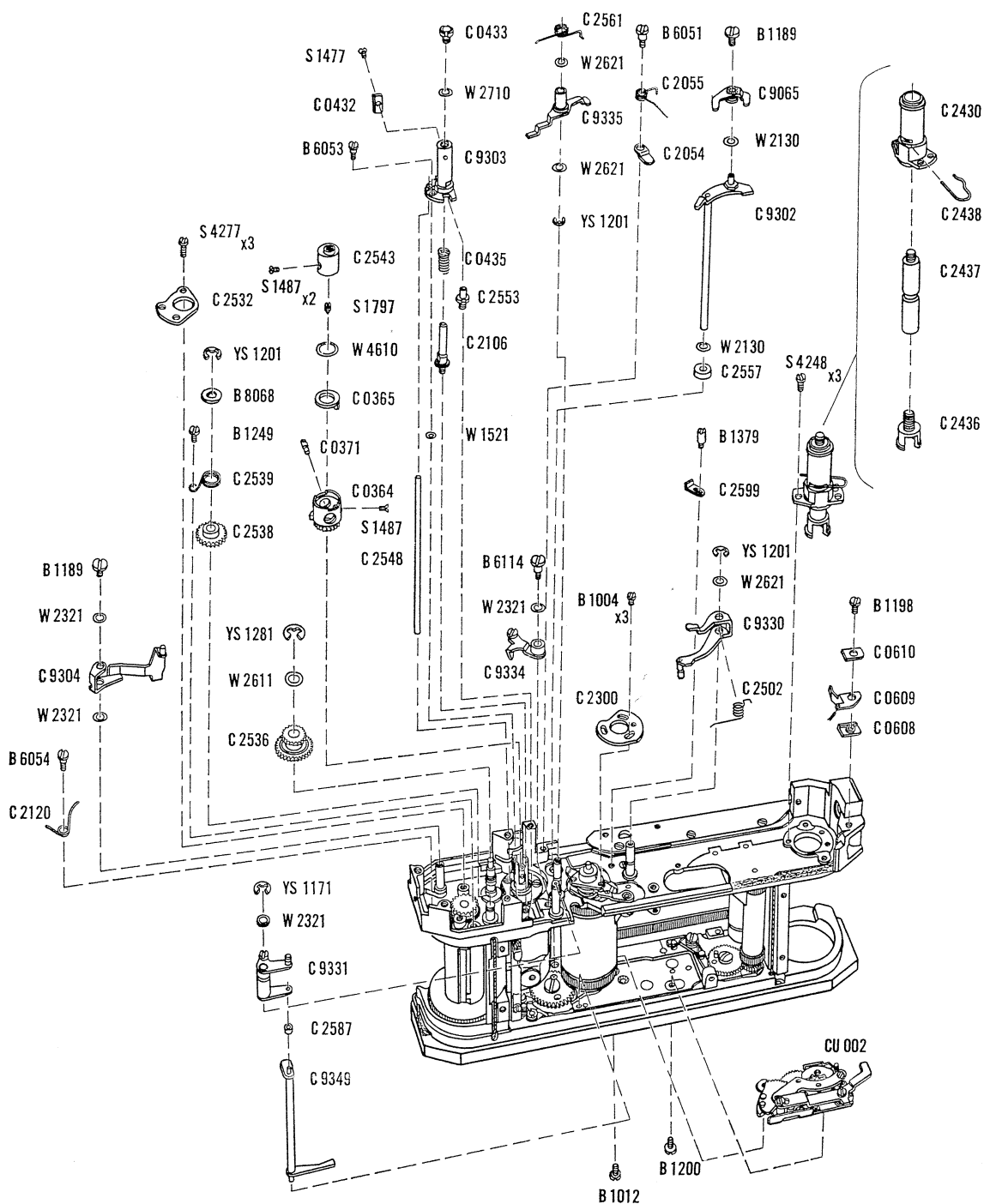


PARTS LIST

RANGE-VIEWFINDER OPTICAL SYSTEM (PART 2) (cf. p. 7)

CU 080	Field Compensator (Unit)
B 1110	Screw×2
SM 0311	Range-Viewfinder Optical System (Unit)
C 9310	Eyepiece (B.P.)
C 9313	Base Plate (B.P.)
C 9314	Arm (B.P.)
C 2399	Coil Spring
C 2400	Arm
C 2405	Viewfinder Selecting Cam
C 2420	Coil Spring
C 2426	Range-Viewfinder Cam
C 2427	Parallax Compensating Screw
C 2428	Bearing for Focusing Roller
C 2429	Washer
C 2439	Light Shield
C 2632	Spring (pulling CU 075)
B 1013	Screw
B 6110	Screw
S 1177	Screw×2
S 2188	Screw
S 2238	Screw×2
{ S 2238 }	Screw
{ C 2633 }	
S 4558	Screw×4
{ W 1930 }	Washer×4
{ W 1931 }	
{ W 1932 }	
{ W 1933 }	
YS 1133	Retaining Washer×2
CU 075	Focusing Roller (Unit)
C 9301	Focusing Roller Lever (B.P.)
C 0746	Roller
C 0748	Screw
B 8125	Washer

EXPLODED VIEW
of
CANON CAMERA MODEL 7



PARTS LIST

REWIND CRANK SHAFT

C 2430	Bearing for Rewind Shaft
C 2436	Rewind Fork
C 2437	Rewind Shaft
C 2438	Spring
S 4248	Screw×3

EXPOSURE COUNTER (cf. p. 7)

C 9304	Resetting Lever (B.P.)
C 2120	Spring
B 1189	Screw
B 6054	Screw
W 2321	Washer×2
W 2322	

SLOW SHUTTER GOVERNOR SET

CU 002	Slow Shutter Governor (Unit)
B 1012	Screw
B 1200	Screw

IDLE GEAR

C 2532	Bearing
C 2536	Idle Gear
C 2538	Gear
C 2539	Spring
B 1249	Screw
B 8068	Washer×N
B 8069	
S 4277	Screw×3
W 2611	Washer×N
W 2612	
YS 1201	Retaining Washer
YS 1281	Retaining Washer

SPROCKET (cf. p. 13)

C 0364	Sprocket Drive Gear
C 0365	Coupler
C 0371	Pin
C 2543	Sprocket Cap
S 1487	Screw×3
S 1797	Screw
W 4610	Washer
W 4611	
W 4612	

FLASH CIRCUIT CONTACT

C 0608	Insulator
C 0609	Contact
C 0610	Insulator
B 1198	Screw

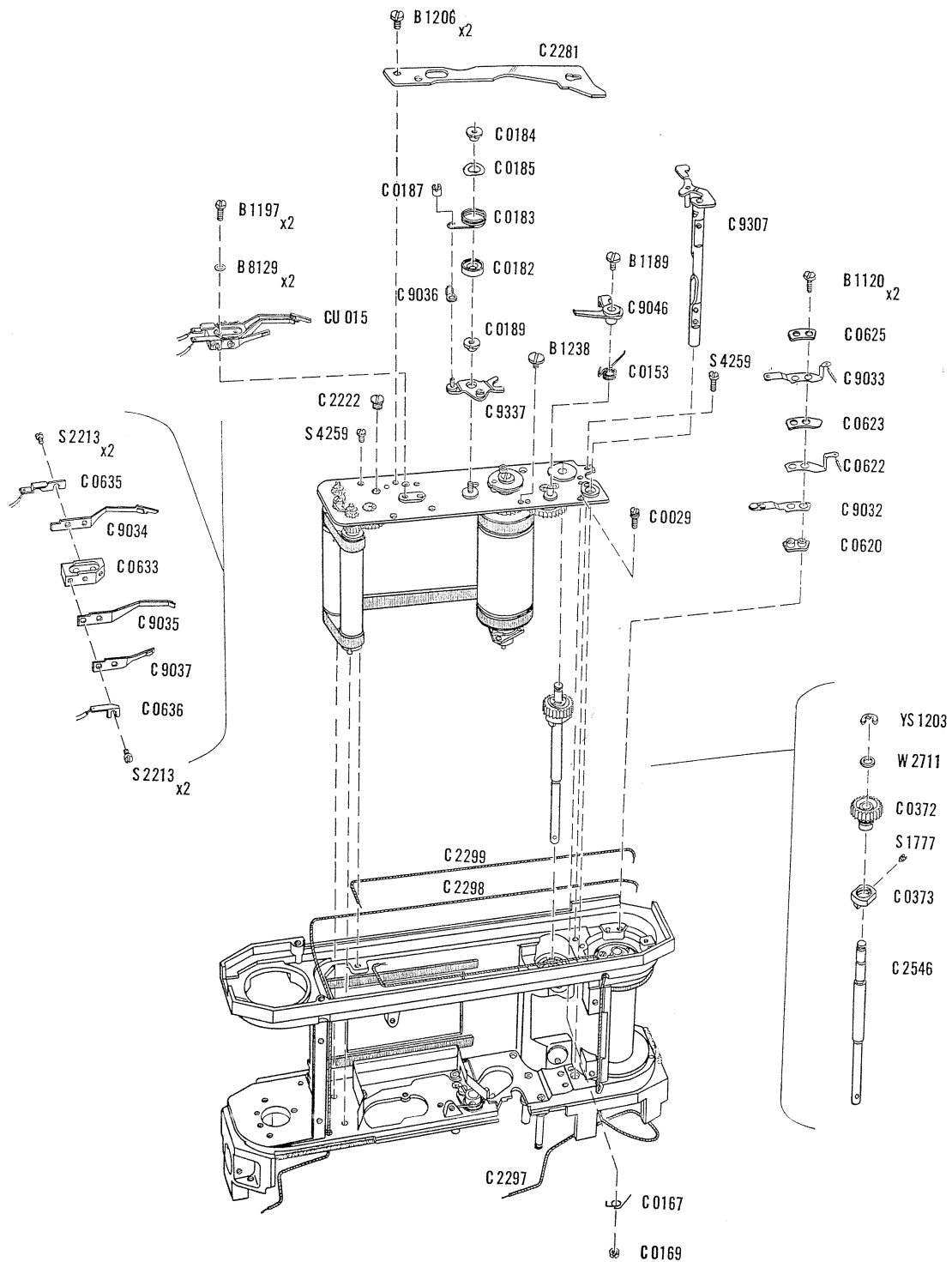
SHUTTER BUTTON (cf. p. 5)

C 9303	Bearing for Shutter Button Shaft (B.P.)
C 0432	Key
C 0433	Pin Face Screw
C 0435	Coil Spring
C 2106	Guide
C 2548	Winding Release Shaft
C 2553	Guide
B 6053	Screw
S 1477	Screw
W 1521	Washer
W 1522	
W 1523	
W 2710	Washer
W 2711	
W 2712	

SHUTTER MECHANISM (PART 1)

C 9065	2nd Curtain Clamp Lever (B.P.)
C 9302	2nd Curtain Clamp Lever (B.P.)
C 9330	Slow Speed Selecting Lever (B.P.)
C 9331	Slow Speed Setting Lever (B.P.)
C 9334	Adjusting Lever for 2nd Curtain Clamp Lever (B.P.)
C 9335	T-Lever (B.P.)
C 9349	Slow Speed Setting Lever (B.P.)
C 2054	Cap
C 2055	Spring
C 2300	Cam for High Speed
C 2502	Coil Spring
C 2557	Collar
C 2561	Spring
C 2587	Collar
C 2599	Stopper
B 1004	Screw×3
B 1240	
B 1189	Screw
B 1379	Screw
B 6051	Screw
B 6114	Screw
W 2130	Washer×2
W 2131	
W 2132	
W 2321	Washer×2
W 2322	
W 2621	Washer×3
W 2622	
YS 1171	Retaining Washer
YS 1201	Retaining Washer×2

EXPLODED VIEW
of
CANON CAMERA MODEL 7



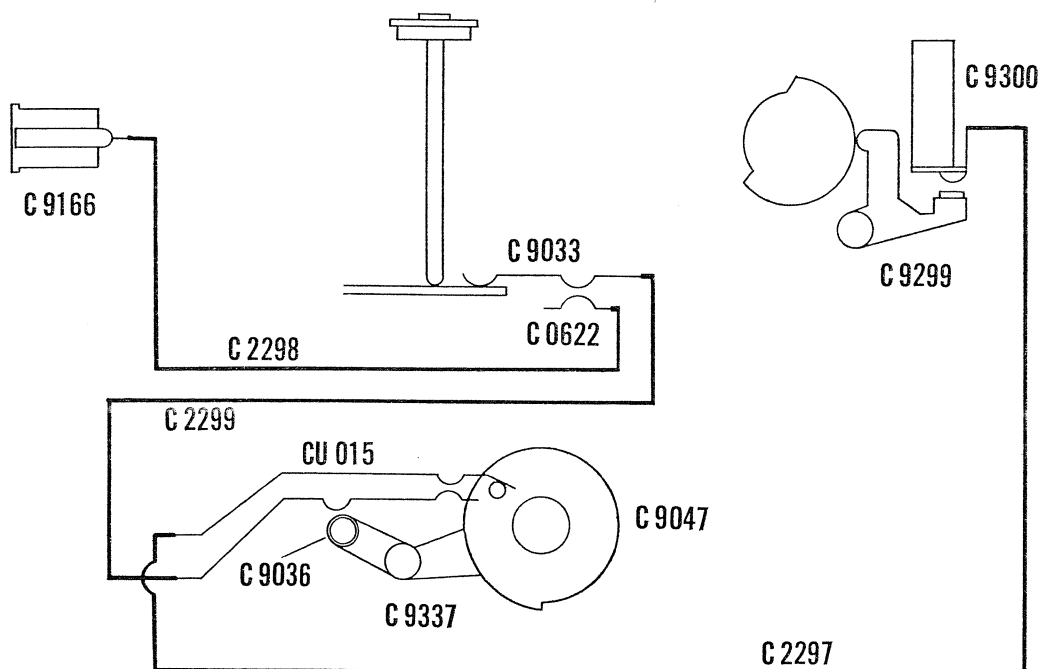
PARTS LIST

SHUTTER MECHANISM (PART 2) (cf. p. 12)

CU 015	Flash Contact (Unit)	C 0622	Flash Contact
C 9034	Flash Contact (B.P.)	C 0623	Insulator
C 9035	Flash Contact (B.P.)	C 0625	Insulator
C 9037	X Contact (B.P.)	C 2222	Screw
C 0633	Insulator Base	C 2281	Shutter Release Plate
C 0635	Lug	C 2546	Sprocket Shaft
C 0636	Lug	B 1120	Screw×2
S 2213	Screw×4	B 1189	Screw
C 9032	Flash Contact (B.P.)	B 1197	Screw
C 9033	Flash Contact (B.P.)	B 1206	Screw×2
C 9036	X Contact (B.P.)	B 1238	Screw
C 9046	Shutter Release Lever (B.P.)	B 8129	Washer×2
C 9307	Shutter Release Shaft (B.P.)	S 1777	Screw
C 9337	Brake Lever for 1st Curtain (B.P.)	S 4259	Screw×2
C 0029	Screw	W 2711	Washer
C 0153	Spring	W 2712	
C 0167	Spring	W 2715	
C 0169	Nut	YS 1203	Retaining Washer
C 0182	Collar		
C 0183	Coil Spring		
C 0184	Nut		
C 0185	Spring Washer		
C 0187	Nut		
C 0189	Nut		
C 0372	Gear		
C 0373	Clutch		
C 0620	Insulator		

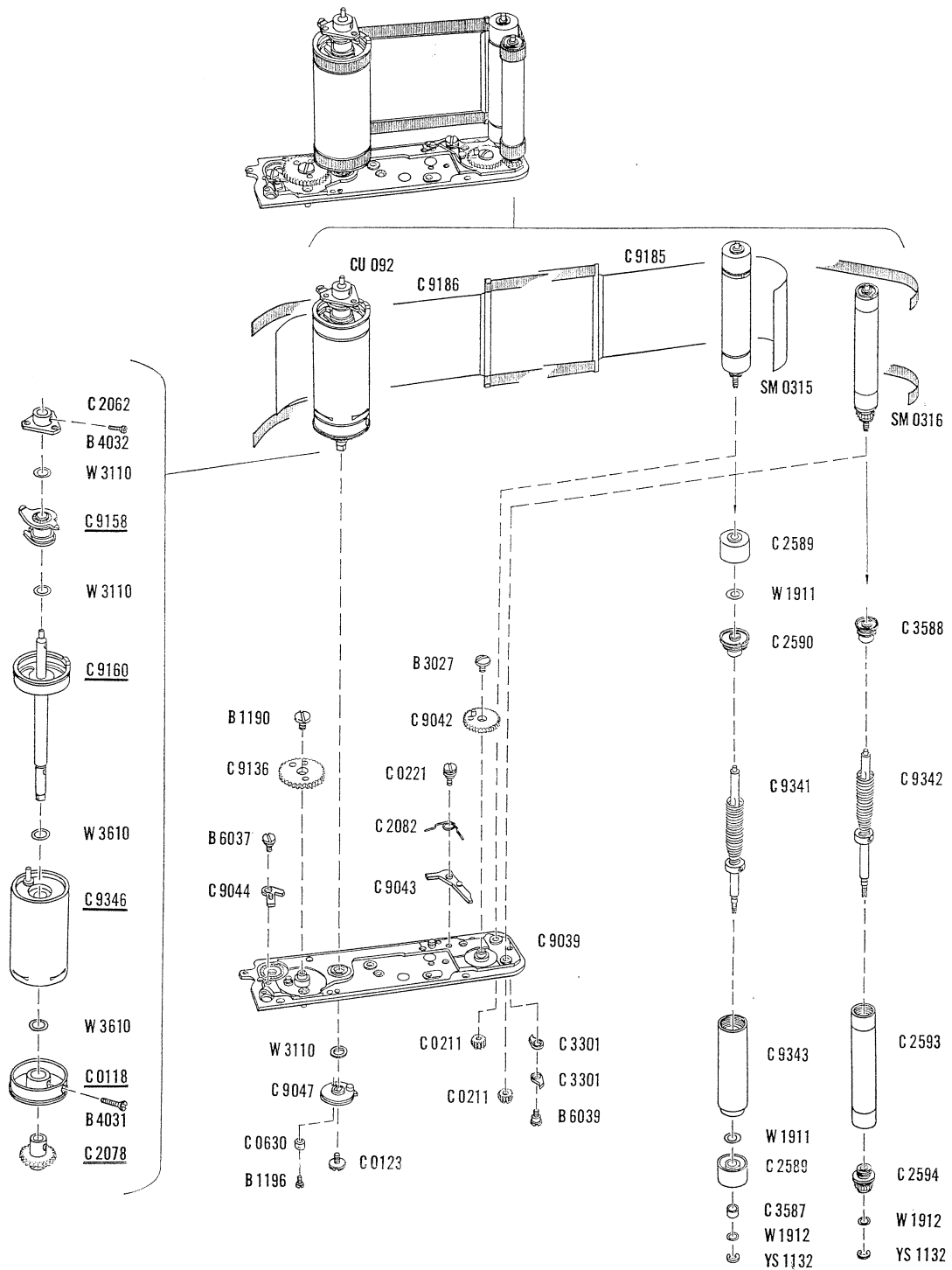
LEAD WIRE

C 2297	Lead Wire (230 mm long)
C 2298	Lead Wire (225 mm long)
C 2299	Lead Wire (112 mm long)



THE CIRCUIT DIAGRAM OF FLASH SYNCHRONIZER

EXPLODED VIEW
of
CANON CAMERA MODEL 7



PARTS LIST

SHUTTER MECHANISM (PART 2) (cf. p. 11)

CU 092 Shutter Drum (Unit)

C 2062	Bearing
B 4031	Screw
B 4032	Screw
W 3110	Washer×2
W 3111	
W 3112	
W 3610	Washer×2
W 3611	
W 3612	

SM 0315 1st Curtain Shaft (Unit)

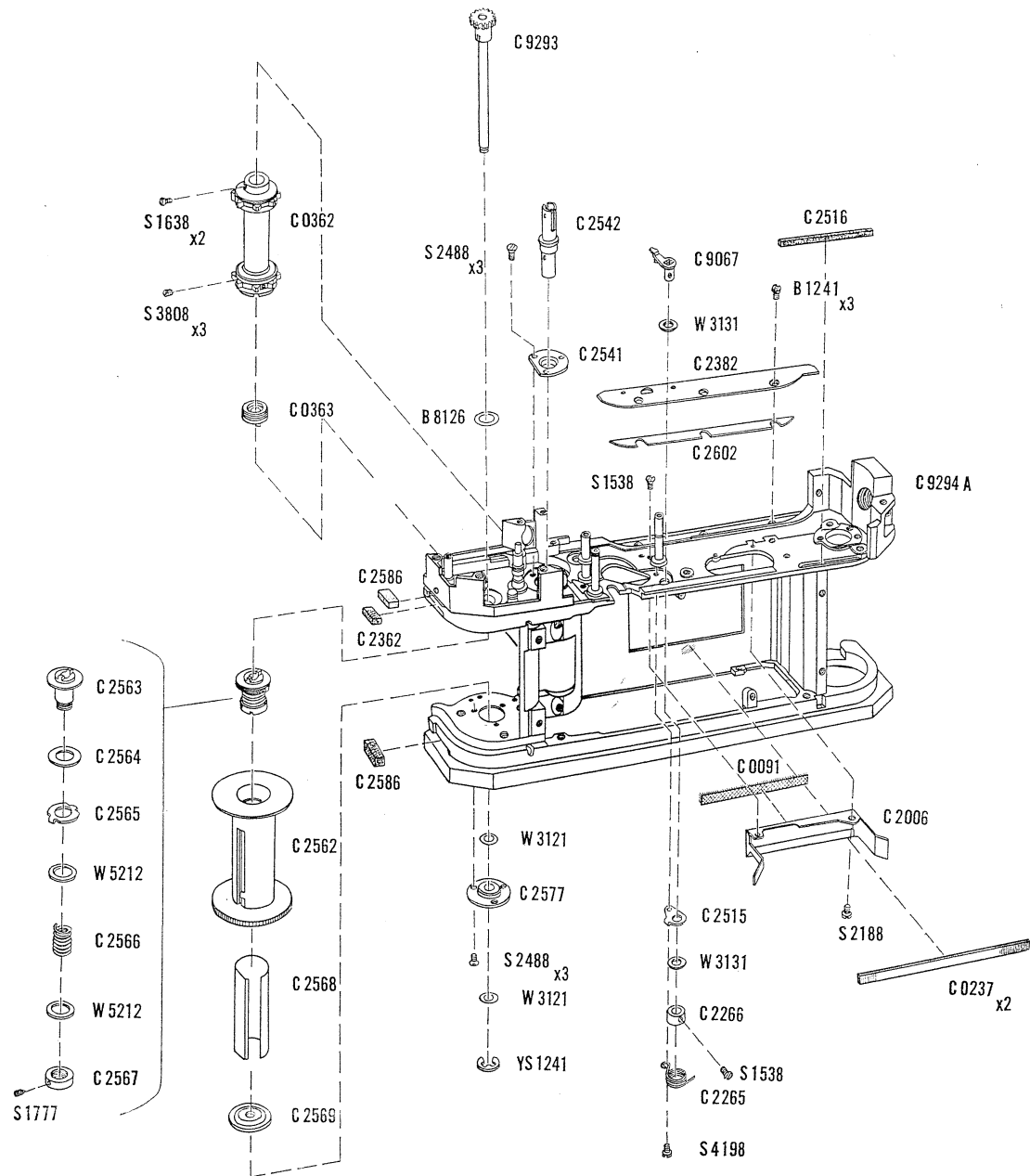
C 9341	1st Curtain Spring (B.P.)
C 9343	1st Curtain Shaft (B.P.)
C 2589	Roller×2
C 2590	Nut
C 3587	Collar
W 1911	Washer×2
W 1912	Washer
YS 1132	Retaining Washer

SM 0316 2nd Curtain Shaft (Unit)

C 9342	2nd Curtain Spring (B.P.)
C 2593	2nd Curtain Shaft
C 2594	Anchor Release Gear
C 3588	Nut
W 1912	Washer
YS 1132	Retaining Washer

C 9039	Base Plate for Shutter Drum (B.P.)
C 9042	2nd Curtain Brake and Anchor Release Gear (B.P.)
C 9043	2nd Curtain Brake Lever (B.P.)
C 9044	Shutter Release Safety Lever (B.P.)
C 9047	Shutter Release Disc (B.P.)
C 9136	Idle Gear (B.P.)
C 9185	1st Metal Curtain (B.P.)
C 9186	2nd Metal Curtain (B.P.)
C 0123	Screw
C 0211	Spring Tension Adjusting Ratchet Nut×2
C 0221	Screw
C 0630	Collar
C 2082	Spring
C 3301	Claw×2
B 1190	Screw
B 1196	Screw
B 3027	Screw
B 6037	Screw
B 6039	Screw
W 3110	Washer
W 3111	
W 3112	
W 3113	

EXPLODED VIEW
of
CANON CAMERA MODEL 7



PARTS LIST

BODY CASE

C 9294A Body Case (B.P.)

SPROCKET (cf. p. 10)

C 0362 Sprocket

C 0363 Clutch

C 2541 Bearing

C 2542 Sprocket Shaft

S 1638 Screw×2

S 2488 Screw×3

S 3808 Screw×3

SOME BASIC PARTS

C 0091 Light Shield

C 0237 Light Shield×2

C 2006 Light Shield

C 2362 Light Shield

C 2382 Base Plate

C 2516 Light Shield

C 2586 Light Shield×2

C 2602 Washer

B 1241 Screw×3

S 1538 Screw

S 2188 Screw

SHUTTER MECHANISM (PART 3)

C 9067 Brake Lever for 2nd Curtain (B.P.)

C 2265 Coil Spring

C 2266 Collar

C 2515 Washer

S 1538 Screw

S 4198 Screw

[W 3131] Washer×2

[W 3132]

WINDING SHAFT & TAKE-UP SPOOL

C 9293 Take-Up Spool Shaft (B.P.)

C 2562 Take-Up Spool

C 2563 Friction Shaft

C 2564 Washer

C 2565 Joint

C 2566 Coil Spring

C 2567 Collar

C 2568 Spring Plate

C 2569 Bearing

C 2577 Bearing

[B 8126] Washer

[B 8127]

S 1777 Screw

S 2488 Screw×3

[W 3121] Washer×2

[W 3122]

W 5212 Washer×2

YS 1241 Retaining Washer

INDEX OF PART NUMBERS

PART NO.	PAGE	PART NO.	PAGE	PART NO.	PAGE	PART NO.	PAGE
CU 001	7	C 9027	7	C 9319	5	C 0184	11
CU 002	10	C 9028	7	C 9320	6	C 0185	11
CU 015	11	C 9032	11	C 9321	6	C 0187	11
<u>CU 074A</u>	9	C 9033	11	C 9322	6	C 0189	11
CU 075	9	C 9034	11	C 9325	6	C 0211	12
CU 078	7, 8	C 9035	11	C 9326	5	C 0221	12
CU 080	9	C 9036	11	C 9327	8	C 0237	13
CU 082	6	C 9037	11	<u>C 9329</u>	8	C 0270	4
CU 092	12	C 9039	12	C 9330	10	C 0273	4
		C 9042	12	C 9331	10	C 0306	5
		C 9043	12	C 9332	7	C 0314	8
		C 9044	12	<u>C 9333</u>	8	C 0362	13
		C 9046	11	C 9334	10	C 0363	13
		C 9047	12	C 9335	10	C 0364	10
SM 0304	4	C 9065	10	C 9337	11	C 0365	10
SM 0307	6	C 9067	13	C 9339	8	C 0371	10
SM 0308	8	C 9129	1	C 9341	12	C 0372	11
<u>SM 0309</u>	6	C 9134	1	C 9342	12	C 0373	11
SM 0311	9	C 9136	12	C 9343	12	<u>C 0423</u>	8
<u>SM 0312</u>	9	C 9141	3	<u>C 9346</u>	12	<u>C 0424</u>	8
SM 0315	12	<u>C 9158</u>	12	<u>C 9347</u>	8	C 0432	10
SM 0316	12	<u>C 9160</u>	12	C 9349	10	C 0433	10
		<u>C 9163</u>	4	C 9417	8	C 0434	5
		C 9166	5			C 0435	10
		C 9167	4			C 0444	7
		C 9185	12			C 0540	1
		C 9186	12			C 0542	1
		<u>C 9292</u>	6			C 0544	1
		C 9293	13	C 0029	11	C 0547	1
		C 9294A	13	C 0034	2	C 0548	1
		C 9295	5	C 0035	2	C 0552	4
		C 9296	8	C 0036	2	C 0553	4
		<u>C 9297</u>	8	<u>C 0040</u>	3, 4	C 0554	4
		<u>C 9298</u>	3, 4	C 0041	3	C 0555	4
		C 9299	8	C 0042	3	C 0556	4
		C 9300	8	C 0043	3	C 0600-05	5
		C 9301	9	C 0044	3	C 0601	5
		C 9302	10	C 0045	3	C 0603	5
		C 9303	10	C 0060	1	C 0608	10
		C 9304	10	C 0061	1	C 0609	10
		C 9307	11	C 0063	1	C 0610	10
		C 9308F	6	C 0064	1	C 0620	11
		C 9309A	9	C 0091	4, 13	C 0622	11
		C 9310	9	<u>C 0118</u>	12	C 0623	11
		C 9311	5	C 0123	12	C 0625	11
		C 9313	9	C 0153	11	C 0630	12
		C 9314	9	C 0167	11	C 0633	11
		<u>C 9315</u>	9	C 0169	11	C 0635	11
		<u>C 9316</u>	9	C 0182	11	C 0636	11
		<u>C 9317</u>	9	C 0183	11	C 0746	9

PART NO.	PAGE	PART NO.	PAGE	PART NO.	PAGE	PART NO.	PAGE
C 0748	9	<u>C 2419</u>	9	C 2527	7	B 1004	10
C 0991	2	<u>C 2421</u>	9	C 2531	8	B 1005	6
C 0993	2	<u>C 2422</u>	9	C 2532	10	<u>B 1010</u>	9
C 0995	2	<u>C 2423</u>	9	C 2534	5	B 1012	10
C 0998	2	<u>C 2424</u>	9	C 2536	10	B 1013	9
C 2006	13	C 2426	9	C 2538	10	B 1110	9
C 2007	4	C 2427	9	C 2539	10	B 1120	11
C 2009	4	C 2428	9	C 2541	13	B 1132	7
C 2054	10	C 2429	9	C 2542	13	B 1186	2
C 2055	10	C 2430	10	C 2543	10	B 1187	2
C 2062	12	C 2431	5	C 2544	7	B 1189	10, 11
C 2076	4	C 2434	5	C 2545	5	B 1190	12
<u>C 2078</u>	12	C 2435	5	C 2546	11	B 1196	12
C 2082	12	C 2436	10	C 2548	10	B 1197	11
C 2106	10	C 2437	10	C 2553	10	B 1198	6, 10
C 2113	5	C 2438	10	C 2557	10	B 1200	11
<u>C 2114</u>	8	C 2439	9	C 2561	10	B 1201	2
C 2120	10	C 2442	6	C 2562	13	B 1206	11
C 2131	7	C 2443	6	C 2563	13	B 1238	11
C 2134	7	C 2448	6	C 2564	13	B 1240	10
C 2135	7	C 2451	6	C 2565	13	B 1241	13
C 2139	7	C 2464	5	C 2566	13	B 1249	10
C 2140	7	C 2466	5	C 2567	13	B 1266	7
C 2142	7	C 2467	6	C 2568	13	B 1267	7
C 2218	2	C 2468	6	C 2569	13	B 1268	7
C 2220	7	C 2469	6	C 2577	13	B 1282	6
C 2222	11	C 2472	6	C 2579	2	B 1286	8
C 2244	8	<u>C 2475</u>	6	<u>C 2583</u>	9	B 1359	7
C 2265	13	C 2476	6	C 2585	8	<u>B 1360</u>	9
C 2266	13	C 2481	8	C 2586	13	B 1361	5
C 2281	11	<u>C 2482</u>	8	C 2587	10	B 1362	5
C 2290	3	<u>C 2483</u>	8	C 2589	12	B 1365	8
C 2291	3	<u>C 2485</u>	8	C 2590	12	B 1366	8
C 2294	2	<u>C 2486</u>	8	C 2593	12	B 1379	10
C 2297	11	C 2489	8	C 2594	12	B 3027	12
C 2298	11	C 2490	8	C 2598	8	B 3033	3
C 2299	11	C 2491	8	C 2599	10	B 3034	3
C 2300	10	C 2493	8	C 2601	5	B 3038	2
C 2362	13	C 2494	8	C 2602	13	B 3039	2
C 2375	6	C 2495	8	C 2608	3	B 3059	6
C 2380	5	C 2496	8	<u>C 2609</u>	9	B 4031	12
C 2381	5	C 2497	8	C 2632	9	B 4032	12
C 2382	13	C 2498	8	C 2633	9	B 4035	4
<u>C 2389</u>	9	C 2502	10	C 3301	12	B 6007	6
<u>C 2390</u>	9	<u>C 2510</u>	8	C 3490	2	B 6037	12
C 2392	6	C 2513	8	C 3587	12	B 6039	12
C 2399	9	C 2515	13	C 3588	12	B 6040	4
C 2400	9	C 2516	13			B 6041	4
C 2405	9	C 2520	5			B 6051	10
<u>C 2414</u>	9	C 2522	5			B 6053	10
<u>C 2415</u>	9	C 2523	5			B 6054	10
<u>C 2416</u>	9	C 2526	7			B 6110	9

PART NO.	PAGE	PART NO.	PAGE	PART NO.	PAGE	PART NO.	PAGE
B 6111	8	S 1167	6, 8	W 1930	9	YS 1131	8
B 6113	8	<u>S 1168</u>	8	W 1931	9	YS 1132	12
B 6114	10	S 1177	5, 9	W 1932	9	YS 1133	9
B 8005	7	S 1187	8	W 1933	9	YS 1171	6, 10
B 8006	7	S 1207	8	W 2110	8	YS 1201	10
B 8058	1	S 1477	10	W 2111	8	YS 1203	11
B 8059	1	<u>S 1478</u>	9	W 2112	8	YS 1241	13
B 8068	10	S 1487	10	W 2130	10	YS 1281	10
B 8069	10	<u>S 1488</u>	9	W 2131	10	YS 1501	8
<u>B 8102</u>	8	<u>S 1507</u>	8	W 2132	10		
B 8104	8	<u>S 1528</u>	9	W 2321	10		
B 8105	8	S 1538	13	W 2322	10		
B 8106	8	S 1638	13	W 2610	6		
B 8123	1	S 1777	11, 13	W 2611	6, 10		
B 8124	1	<u>S 1777</u>	8	W 2612	6, 10		
B 8125	9	S 1796	5	W 2621	10		
B 8126	13	S 1797	10	W 2622	10		
B 8127	13	S 2188	9, 13	W 2710	10		
B 8129	11	S 2194	4	W 2711	10, 11		
B 8311	7	S 2208	4	W 2712	10, 11		
B 8312	5	S 2213	11	W 2715	11		
		S 2238	9	W 3110	12		
		S 2488	13	W 3111	12		
		S 2508	2	W 3112	12		
		<u>S 2527</u>	9	W 3121	13		
		S 2715	6	W 3122	13		
E 6015	6	S 3228	6	W 3131	13		
		S 3257	7	W 3132	13		
		S 3808	13	W 3610	7, 12		
		S 3818	5	W 3611	7, 12		
		S 4197	7	W 3612	7, 12		
		S 4198	13	W 4610	10		
<u>ER 0314</u>	6	S 4248	10	W 4611	10		
		S 4257	7	W 4612	10		
		S 4259	2, 11	W 5212	13		
		S 4277	10	W 6210	5, 8		
		S 4551	1	W 6211	5, 8		
		S 4558	9	W 6212	8		
<u>ES 4004</u>	6	S 4651	5	W 6213	8		
		S 6288	7				
		S 6298	1				
		S 6557	7				
G 5237	6			Y 9001	8		
<u>G 5238</u>	9			Y 9010	6		
<u>G 5239A</u>	9						
<u>G 5241B</u>	9	W 1521	10				
G 5244	5	W 1522	10				
<u>G 5246A</u>	9	W 1523	10				
		W 1911	12				
		W 1912	12	YS 1101	6		

TABLE OF CONTENTS

RANGE-VIEWFINDER

- * When the double-image of the range-viewfinder does not align..... 1
- * When there is a parallax in the range-viewfinder..... 1
- * When, after changing the viewfinder frame, a portion of another
frame is visible..... 1
- * When the range-viewfinder selector and viewfinder do not couple..... 2

SHUTTER SPEED DIAL

- * When the shutter speed dial and film speed dial do not couple..... 3
- * When the film speed dial does not hold its position when the shutter
speed dial is turned while pressing down the film speed indicator. 3

LIGHT METER

- * When the light meter needle does not move..... 4
- * When "O" position of the light meter is not correct..... 4

WINDING LEVER

- * When the winding lever does not move..... 5
- * When an unusual noise is heard when winding the winding lever..... 5
- * When the winding lever races or slips..... 5

EXPOSURE COUNTER

- * When the exposure counter does not return to "S" when the back
cover is opened..... 6

SHUTTER MECHANISM

- * When there is no exposure even though the shutter is released..... 7
- * When the exposure is different on the right and left sides of
the picture..... 7
- * When the shutter speed is inaccurate..... 8
- * When the exposure time of 1/15 is long..... 8
- * When the exposure time of 1/15 is short..... 9
- * When set at B, if the shutter closes, or the shutter remains open
even after the finger has been removed from the shutter button.... 9
- * When set at T, if the shutter closes when the finger has been removed
from the shutter button.... 9
- * When the shutter button does not come up or does not return smoothly
to normal when the finger has been removed after pressing the
shutter button..... 9

SELF-TIMER

- * When the shutter is released simultaneously with the start of the Self-Timer after the Self-Timer has been set and the shutter button has been pressed.....10
- * When the self-timer stops in mid-operation.....10
- * When the shutter is released at an unusual point after the self-timer has been set in motion.....10

INCORRECT FOCUS

- * When the flange focal distance is incorrect.....11
- * When the range-viewfinder is out of order.....11
- * When the lens is bad.....11

* * *

RANGE-VIEWFINDER

When the double-image of the range-viewfinder does not align, it is adjusted in the following manner:

1. When there is a vertical deviation in the double-image

Set the Shutter Speed Dial to a figure other than 1 - 30 graduation and then remove Pin Face Screw C2375 with Tool T06A-C2375-1. Insert a screwdriver (6 pcs set No. 2) into the hole made by removing C2375 and turn Screw C2424. When it is turned in a clockwise direction the image moves downward. Be careful that the screwdriver does not touch Mirror G5228 and that it does not push down too hard on C2424.

See Repair Manual pages 6 & 9.

2. When there is a horizontal deviation in the double-image

Remove Screw B3059. Insert a screwdriver (6 pcs set No. 2) into the hole made by removing B3057 and turn Screw C2419. When it is turned in a clockwise direction the image moves to the left.

See Repair Manual pages 6 & 9.

3. When the double-image aligns at infinity but has a deviation at short distances

Insert Tool T06A-C151-747A or T06A-C151-747B between Focusing Roller Lever C9301 and Roller C0746 and turn the eccentric ring of C9301. Next, attach the lens and adjust the horizontal image. Repeat this operation until an accurate image is obtained.

See Repair Manual page 9.

When there is a parallax in the range-viewfinder it is adjusted, in the following manner, by attaching the camera to the Inspection Device for Viewfinder Field:

Set the viewfinder for 100mm use and then check whether the viewfinder frame works satisfactorily from infinity to 3.5 feet. Next, make adjustments by turning the eccentric screw of Bright Frame C9316. When complete adjustments cannot be made in this manner, replace Field Compensator CU080.

When, after changing the viewfinder frame, a portion of another frame is visible, make adjustments in the following manner:

Loosen Screw S1177x2, then insert Tool T06A-C2400-1 into the hole of Arm C2400 and turn it and adjust the positions of C2400 and Arm C9316 while looking into the viewfinder. After the adjustment has been made, tighten S1177x2.

See Repair Manual page 9.

When the Range-Viewfinder Selector and viewfinder frame do not couple when shifted, it is adjusted in the following manner:

1. When the Range-Viewfinder Selector and Viewfinder Selecting Cam C2405 do not couple because the Top Cover is loose, mesh the Viewfinder Selector with C2405 and then, while pushing the Top Cover down, tighten the Flash Terminal.
2. If the Light Meter circuit under the Top Cover is out of position and is touching the viewfinder mechanism, return the circuit to its correct position.

* * *

SHUTTER SPEED DIAL

When Shutter Speed Dial C2466 and Film Speed Dial C9326 do not couple it is adjusted in the following manner:

Change Spring Washer C2464 which is between C2466 and C9326 for a thicker one. Be careful that C2464 is not too thick, because in such a case C9326 will not hold its position when Film Speed Indicator Button C2468 is pressed.

See Repair Manual pages 5 & 6.

When Film Speed Dial C9326 does not hold its position when the Shutter Speed Dial is turned while pressing down Film Speed Indicator Button C2468, it is adjusted in the following manner:

1. If the rubber on the bottom part of C9326 has come off, glue it back on with Pliobond.

See Repair Manual page 5.

2. If Clutch Lever C2513 slips due to weak friction, replace C2513.

See Repair Manual page 8.

* * *

LIGHT METER

When the Light Meter needle does not move, it is adjusted in the following manner:

1. Check the various connections and adjust the bad connections. Be particularly careful of the Light Meter Sensitivity Shifting Switch part.

See Repair Manual page 6.

2. If the solder has come off, resolder it. Be particularly careful of the part where Photoelectric Cell ES4004 is grounded to Top Cover SM0307.

See Repair Manual page 6.

3. If the light meter needle is touching Light Meter Dial C9325, because C9325 is slanting, it is adjusted by bending Base Plate C9347 of the Shutter Speed Selector.

See Repair Manual pages 6 & 8.

4. If a wire inside Galvanometer SM0309 is cut, replace Light Meter CU082.

See Repair Manual page 6.

When "0" position of the Light Meter is not correct, it is adjusted in the following manner:

Open the Back Cover, insert a screwdriver into the half-circle hole of Base Plate C2382, which is under Galvanometer SM0309, and make the adjustment by turning the screwdriver to right or left.

See Repair Manual pages 6 & 13.

* * *

WINDING LEVER

When the Winding Lever does not move, it is adjusted in the following manner:

1. When Feeding Claw C9027 has protruded outside of Stopper Claw C9028, insert Washers W3610 on the top and bottom of C9027 and Washers W1810 on the top and bottom of C9028 to lessen the play of both claws as much as possible.

See Repair Manual page 7.

2. When the Base Plate for Winding Mechanism SMO308 is deformed, replace SMO308.

See Repair Manual page 8.

3. Adjust the gap between Bearing for Shutter Button Shaft C9303 and Sprocket Drive Gear C0364 at 0.1 - 1.0mm.

See Repair Manual page 10.

4. When Shutter Release Safety Lever C9044 is deformed, replace C9044.

See Repair Manual page 12.

When an unusual noise is heard when winding the Winding Lever, it is adjusted in the following manner:

1. Refer to the clause "Shutter Is Released But No Exposure", and then oil the Shutter Mechanism.
2. If the finish on Spring C2539 is bad, replace C2539.

See Repair Manual page 10.

When the Winding Lever races or slips, it is adjusted in the following manner:

1. If the teeth of Idle Gear C2536 are broken, replace C2536.

See Repair Manual page 10.

2. If Spring C2244 is weak, replace C2244.

See Repair Manual page 8.

* * *

EXPOSURE COUNTER

When the Exposure Counter does not return to "S" when the Back Cover is opened, it is adjusted in the following manner:

1. If oil has seeped to the back side of Exposure Counter Dial C9332 and the performance of C9332 has decreased, wipe off the oil.

See Repair Manual page 7.

2. If Washer B8005 is too thick and the performance of C9332 is bad, change B8005 with B8006.

See Repair Manual page 7.

* * *

SHUTTER MECHANISM

When there is no exposure (shutter does not open) even though the shutter is released, it is checked in the following order and the bad parts are adjusted.

1. Remove the Front and Back Cover, release the shutter, and then oil, with an injector, all the revolving bearings with one or two drops of specified oil. Be careful not to oil too much as the oil will ooze out onto the shutter curtain.

See Repair Manual page 2.

2. When Shutter Speed Selector CU078 is deformed, replace CU078.

See Repair Manual page 7.

3. When the working of 2nd Curtain Clamp Lever C9302 is bad, check Spring C2055. If C2055 has become dislocated or weak, return C2055 to its correct position or replace it.

If the pressure of Cap C2054 is too strong, bend C2054 and weaken the pressure. Be careful, at this time, not to make the play too big at the top and bottom of C9302.

See Repair Manual page 10.

4. When the mesh between 2nd Curtain Clamp Lever C9302 and 2nd Curtain Release Lever C9158 is shallow, set the shutter at B, and while pressing down the shutter adjust the position of the eccentric screw of Adjusting Lever for 2nd Curtain Clamp Lever C9334 and the position of Stopper C2599 so that the mesh of C9302 and C9158 is 0.3mm by eye-measurement.

See Repair Manual pages 10 & 12.

5. When the caulking of 2nd Curtain Release Lever C9158 has become dislocated, replace Shutter Drum CU092.

See Repair Manual page 12.

When the exposure is different on the right and left sides of the picture, it is adjusted in the following manner:

1. After referring to the clause "Shutter Is Released But No Exposure", oil the various bearings of the Shutter Mechanism.
2. When the speeds of the first curtain and the second curtain are different, loosen Screw B6039, remove the mesh of Claw C3301, and make the adjustment by turning Spring Tension Adjusting Ratchet Nut C0211 to the right or left. This adjustment is performed while testing with the Shutter Tester.

See Repair Manual page 12.

When the Shutter Speed is inaccurate, it is adjusted in the following manner by using the Shutter Tester:

1. Adjustment of high-speed shutter ($1/60$ - $1/1000$)

Make sure that Spring C2055 is in the groove of 2nd Curtain Clamp Lever C9065.

Adjust the speed of $1/250$ by turning the eccentric nut of 2nd Curtain Clamp Lever C9302 to the right or left with Tool T06A-C2051-1.

Next, test the speed for $1/1000$, and if it is not up to specifications, remove screws S6567 and S3237x2, remove Shutter Speed Selector CU078, loosen Screw B1004x3 and adjust by moving Cam for High Speed C2300 to the right or left.

See Repair Manual pages 7 & 10.

2. Adjustment of slow shutter (1 - $1/30$)

Loosen Screw S1207 and make the adjustment by turning Eccentric Collar C2497 to right or left.

By removing the Shutter Speed Dial this adjustment can be performed with two small screwdrivers without taking off the Top Cover.

See Repair Manual page 8.

When, due to deformation of Slow Speed Selecting Lever C9330, the Anchor of Slow Shutter Governor CU002 does not become detached at $1/15$ and the exposure time is extended to approximately 1 second, it is adjusted in the following manner:

Bend C9330 so that it touches the cam of Shutter Speed Selecting Disc C9329.

See Repair Manual pages 8 & 10.

When Slow Shutter Governor CU002 does not operate at 1/15, because the mesh between Slow Speed Setting Lever C9349 and 2nd Curtain Release Lever C9158 is shallow, and the exposure time is short, it is adjusted in the following manner:

1. If there is an allowance in the mesh between Shutter Release Lever C9046 and Shutter Release Disc C9047 when the Winding Lever is fully wound, replace C9047 and adjust.

See Repair Manual pages 11 & 12.

2. Set CU002 deep in the Body. However, be careful of the fact that if it is set too deep it will sometimes stop and the shutter will remain open.

See Repair Manual page 10.

3. Abrade with oilstone the part of C9349 that touches C9158.

See Repair Manual page 10.

When set at B, if the shutter closes, or the shutter remains open even after the finger has been removed from the shutter button, it is adjusted in the following manner:

By turning the eccentric screw of Adjusting Lever for 2nd Curtain Clamp Lever C9334, adjust the mesh between 2nd Curtain Clamp Lever C9158 and 2nd Curtain Clamp Lever C9302 at 0.3mm by eye-measurement after pressing the shutter button. After this adjustment has been completed, check the other shutter speeds.

See Repair Manual page 10.

When set at T, if the shutter closes when the finger has been removed from the shutter button, it is adjusted in the following manner:

Bend upwards the end of T-Lever C9335 which touches Bearing for Shutter Button Shaft C9303 so that it can drop easily into the hole of C9303.

See Repair Manual page 10.

When the shutter button does not come up or does not return smoothly to normal when the finger has been removed after pressing the shutter button, it is checked and adjusted in the following manner:

1. If the sliding of Bearing for Shutter Button Shaft C9303 is bad, grease Guide C2106.

See Repair Manual page 10.

2. If C2106 is bent, replace C2106.

See Repair Manual page 10.

3. If the spring of Shutter Release Plate C2281 is weak, bend C2281 to increase the effect of the spring.

See Repair Manual page 11.

SELF-TIMER

When the shutter is released simultaneously with the start of the Self-Timer after the Self-Timer has been set and the shutter button has been pressed, it is adjusted in the following manner:

Loosen Screw B1132x2 and adjust by sliding Self-Timer Starting Knock C0444 in a downward direction.

See Repair Manual page 7.

When the Self-Timer stops in mid-operation, it is adjusted in the following manner:

If the Spring used in Self-Timer CU002 is dislocated, return the Spring to its correct position. If the Spring is broken, replace CU002.

See Repair Manual page 7.

When the shutter is released at an unusual point after the Self-Timer has been set in motion, it is adjusted in the following manner:

Replace Screw B1266 with Screws B1267 and B1268 of different diameters. When replaced with the small-diameter B1267 the shutter release will be delayed, and when replaced with the large-diameter B1268 the shutter release will be hastened.

See Repair Manual page 7.

* * *

INCORRECT FOCUS

When the flange focal distance is incorrect, it is adjusted in the following manner:

Measure the distance between the lens mount and the pressure plate with the 28.8mm Gauge and adjust it with Adjusting Washers C0034 so that it is within ± 3 of standard graduation.

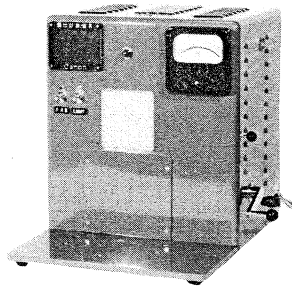
If Front Cover C9163 should become indented by some kind of percussion for over ± 10 graduations, replace Front & Back Cover SM0304.

See Repair Manual pages 2 & 4.

When the range-viewfinder is out of order, refer to the clause "Range-Viewfinder Double-Image Does Not Align" and adjust.

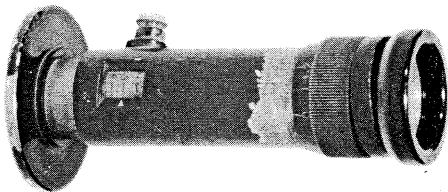
When the lens is bad, as a result of tests with the L-Type Collimator and Lens Projection Tester, repair the lens.

* * *



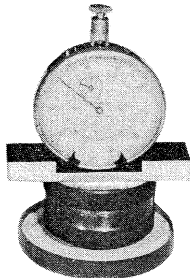
INSPECTION DEVICE FOR CANON METER

For inspecting precision of
Canon Meter



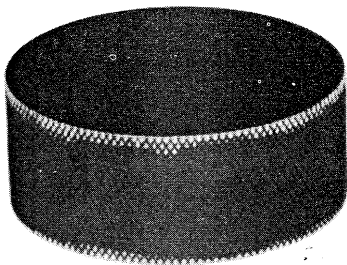
DIOPTOMETER

For inspecting diopter of
the eyepiece



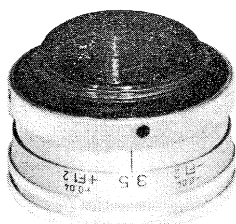
28.8mm GAUGE

For measuring mechanical
back length of cameras



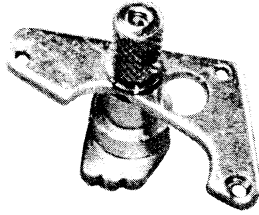
CANON MOUNT GAUGE

For measuring flatness



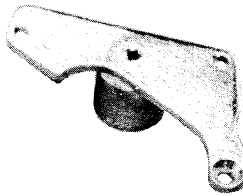
STANDARD HELICOID FOR CANON LENSES

For using as a substitute of
the lens when range-viewfinder
is adjusted



ADAPTER FOR ASSEMBLING

Substitute bearing for the
shutter speed selector



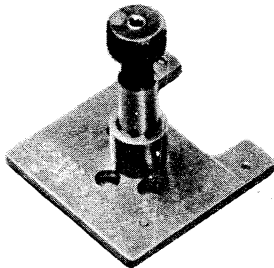
ADAPTER FOR ASSEMBLING

Substitute for shutter
speed selector when shutter
speeds are adjusted



TOOL FOR SPROCKET DRIVE

For winding the shutter when
the shutter speed selector
is removed



LOCATION JIG FOR C2532

For deciding the position of
Bearing (C2532)

Following repair tools are also provided for Canon 7.

INSPECTION DEVICE FOR VIEWFINDER FIELD

For inspecting field-of-view and parallax

UNIVERSAL COLLIMATOR FOR RANGE-VIEWFINDER

For adjusting range-viewfinder

SHUTTER TESTER (ROTARY SLIT TYPE)

For inspecting and adjusting shutter speed of focal-plane shutter

SHUTTER TESTER (PULSE COUNTING TYPE)

For inspecting and adjusting slow speed of focal-plane shutter



TO6A-C151-14



For tightening Guide (C2553).

See Repair Manual p.10.



TO6A-C151-64

For tightening Pin Face Collar (C0064).

See Repair Manual p.1.



TO6A-C151-367



For tightening Film Transport Indicator (C2544).

See Repair Manual p.7.



TO6A-C151-433

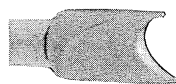


For tightening Pin Face Screw (C0433).

See Repair Manual p.10.



TO6A-C151-602

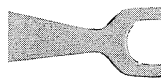


For tightening Flash Terminal (C9166).

See Repair Manual p.5.



TO6A-C151-747A



For tightening Focusing Roller Lever (C9301).

See Repair Manual p.9.



TO6A-C151-747B



ditto



TO6A-C151-998



For tightening Pin Face Screw (C0998).

See Repair Manual p.2.



TO6A-C2106

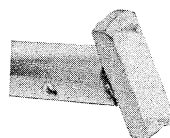


For tightening Guide (C2106).

See Repair Manual p.10.

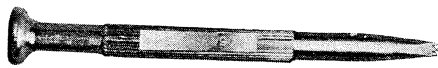


TO6A-C2280



For tightening Pin Face Screw (C2520).

See Repair Manual p.5.



T06A-C2375



For tightening Pin Face Screw (C2375).

See Repair Manual p.6.

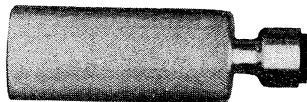


T06A-C2400



For tightening Arm (C2400).

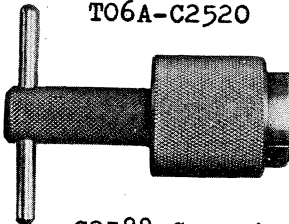
See Repair Manual p.9.



T06A-C2520

For tightening Pin Face Screw (C2520).

See Repair Manual p.5.



C2388 Screwing Tool-1

For tightening Eyepiece (C9311).

See Repair Manual p.5.



C2495 Spanner-1

For tightening Screw (C2495).

See Repair Manual p.8.