



FUJIFILM

DIGITAL CAMERA




FinePix S3Pro

TROUBLESHOOTING GUIDE

US/CA/EU/EG/GE/AS/JP-Model



WARNING

- THE COMPONENTS IDENTIFIED WITH THE MARK “  ” ON THE SCHEMATIC DIAGRAM AND IN THE PARTS LIST ARE CRITICAL FOR SAFETY. PLEASE REPLACE ONLY WITH THE COMPONENTS SPECIFIED ON THE SCHEMATIC DIAGRAM AND IN THE PARTS LIST.
- IF YOU USE PARTS NOT SPECIFIED, IT MAY RESULT IN A FIRE AND AN ELECTRICAL SHOCK.

SAFETY CHECK-OUT

After correcting the original problem, perform the following safety check before return the product to the customer.

1. Check the area of your repair for unsoldered or poorly soldered connections. Check the entire board surface for solder splasher and bridges.
2. Check the interboard wiring to ensure that no wires are "pinched" or contact high-wattage resistors.
3. Look for unauthorized replacement parts, particularly transistors, that were installed during a previous repair. Point them out to the customer and recommend their replacement.
4. Look for parts which, though functioning, show obvious signs of deterioration. Point them out to the customer and recommend their replacement.
5. Check the B + voltage to see it is at the values specified.
6. Make leakage - current measurements to determine that exposed parts are acceptably insulated from the supply circuit before returning the product to the customer.

7.



RISK OF FIRE-
REPLACE FUSE
AS MARKED

CAUTION: FOR CONTINUED PROTECTION AGAINST FIRE HAZARD, REPLACE ONLY WITH SAME TYPE 2.5 AMPERES 125V FUSE.

ATTENTION: AFIN D'ASSURER UNE PROTECTION PERMANENTE CONTRE LES RISQUES D'INCENDIE, REMPLACER UNIQUEMENT PAR UN FUSIBLE DE MEME, TYPE 2.5 AMPERES, 125 VOLTS.

8.



WARNING!
HIGH VOLTAGE

WARNING:
TO REDUCE THE ELECTRIC SHOCK, BE CAREFUL TO TOUCH THE PARTS.

TABLE CONTENTS

1. Power	4
1-1. "Err" displayed on the top panel and the camera does not work	4
1-2. Power supply problems.....	4
1-3. The camera does not turn on with the AC adapter	4
2. Lens.....	5
2-1. The camera will not focus	5
2-2. The lens cannot be mounted and images become dark	5
2-3. Shutter defect.....	6
2-4. AF does not focus	6
3. Image and trace.....	7
3-1. Dust specks appear in photographed images.....	7
3-2. Sync. terminal dislodged	7
3-3. The camera does not automatically switch to vertical position when auto rotate function is set to ON.....	7
3-4. The camera does not automatically switch to vertical position when auto rotate function is set to ON.....	7
3-5. Image files are not read in from Microdrives	8
3-6. Media cannot be ejected	8
3-7. Images cannot be recorded	8
3-8. Recorded images are completely black	9
3-9. Noise (distortion) appears in recorded images	9
4. Operation	10
4-1. Remote release does not work	10
5. LCD.....	11
5-1. Text LCD does not display	11
5-2. Dead pixels in the LCD	11
5-3. LCD monitor cracked	11
6. Operation	12
6-1. USB connector dislodged.....	12
6-2. IEEE 1394 communication fails	12

1. Power

1-1. "Err" displayed on the top panel and the camera does not work
Fault details: "Err" displayed on the top panel and the camera does not work. Analysis results: FUSE_F600 on the MAIN PWB ASSY A side blown.
Repair details: Replace the F600

1-2. Power supply problems
Fault details: <ol style="list-style-type: none"> 1. The camera does not turn on. 2. Power is supplied by the batteries but an error is displayed and the camera does not work. No AC power is supplied. 3. "ERR" is displayed and the camera does not work. (There are reports of "ERR" being displayed during user firmware upgrades.) 4. No text or images appear on the LCD unless a media is inserted. The top LCD panel displays normally but does not clear when the camera is turned off. 5. The camera does not turn off. Analysis results: <ol style="list-style-type: none"> 1. LSI defect in the IEEE 1394 interface in the MAIN PWB ASSY. 2. D600, F601, F603 or IC600 in the MAIN PWB ASSY is broken. Replacing the faulty component remedies the problem. Presumed to be caused by an overvoltage applied from the UNREG line (AC adapter). 3. Replacing IC112 (FROM) on the MAIN PWB ASSY remedies the problem. An interruption to the power supply during downloading causes FROM data corruption. 4. Replacing the MAIN PWB ASSY restores normal camera operation. 5. A current of 300 mA flows simply by connecting the plug from a stable power supply (DC IN 5V). (The same symptoms occur with batteries.) Replacing the MAIN PWB ASSY restores normal camera operation.
Repair details: Replace the MAIN PWB ASSY

1-3. The camera does not turn on with the AC adapter
Fault details: The camera does not turn on with the AC adapter. Analysis results: FUSE_F601 on the MAIN PWB ASSY A side blown.
Repair details: Replace the F601

2. Lens

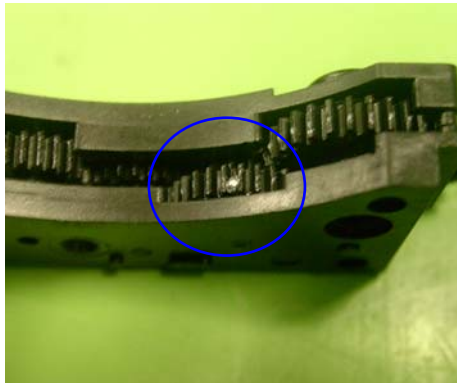
2-1. The camera will not focus

Fault details: The camera will not focus.

Analysis results: Replacing the CAMERA BODY restored normal camera operation.

Results of CAMERA BODY analysis:

Caused by solder balls stuck to the gear teeth surfaces in the AF board assembly. The balls were impeding gear rotation and preventing the rotation of the AF coupling spindle that drives the lens.



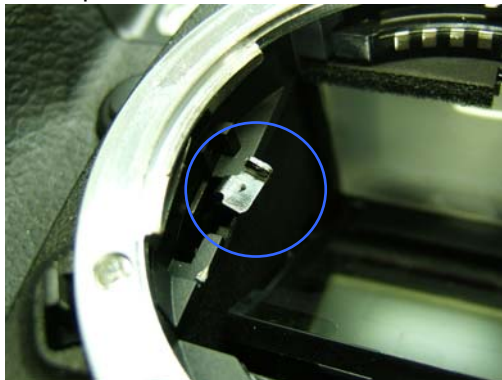
Repair details:

Replace the CAMERA BODY

2-2. The lens cannot be mounted and images become dark

Fault details: The lens cannot be mounted and images become dark.

Analysis results: The "aperture lever" inside the mount could no longer be moved (bent out of shape).



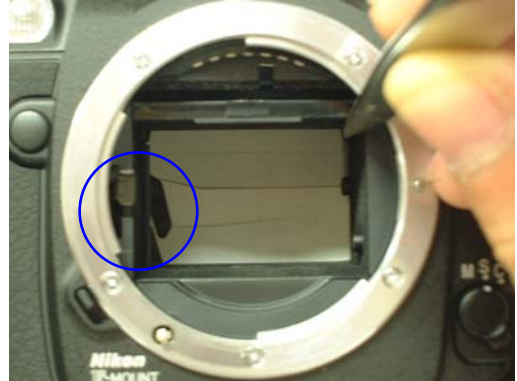
Repair details:

Replace the CAMERA BODY

2-3. Shutter defect

Fault details: When the shutter button is pressed, the mirror stays in the raised position and "Err" is displayed.

Analysis results: The mirror will not return to the normal position because the shutter blade is bent.



Repair details:

Replace the CAMERA BODY

2-4. AF does not focus

Fault details: With the S1, the lens length ring moves but does not focus the image at all.

Analysis results: Replacing the CAMERA BODY restored normal camera operation.

Results of CAMERA BODY analysis:

Caused by sub-mirror blade #233 being disengaged from sub-mirror pin #234.

Repair details:

Replace the CAMERA BODY

3. Image and trace

3-1. Dust specks appear in photographed images

Fault details: Dust specks appear in photographed images.

Analysis results: Dust on the LPF.

Repair details:

Cleaned the LPF

3-2. Sync. terminal dislodged

Fault details: When the sync. terminal cap was removed, the terminal itself broke off.

Analysis results: Presumed to be caused by looseness due to incomplete fastening and adhesion when the sync. terminal was attached.

Repair details:

Replace the Sync. terminal

3-3. The camera does not automatically switch to vertical position when auto rotate function is set to ON

Fault details: The camera does not automatically switch to vertical position when auto rotate function is set to ON.

Analysis results: Defect in MAIN PWB ASSY IC120 (vertical position detection sensor).

Repair details:

See Bulletin GS-2005-025

3-4. The camera does not automatically switch to vertical position when auto rotate function is set to ON

Fault details: The camera does not automatically switch to vertical position when auto rotate function is set to ON.

Analysis results: Defect in the vertical position detection sensor mounted on a modified board.

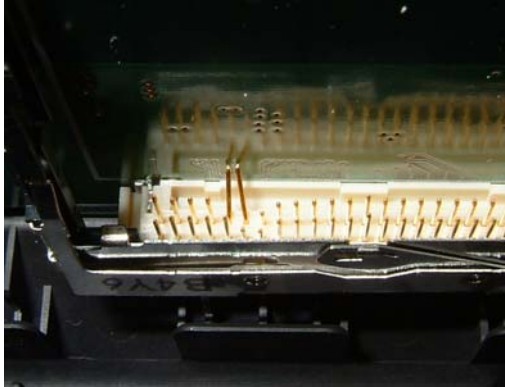
Repair details:

Replaced the vertical position detection sensor (IC120).

3-5. Image files are not read in from Microdrives

Fault details: Image files are not read in from Microdrives.

Analysis results: Two of the pins in CN801 on the MAIN PWB ASSY were bent.



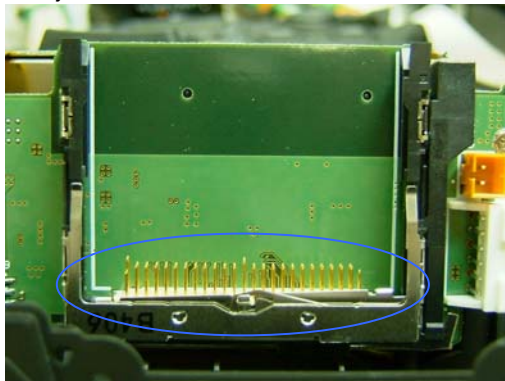
Repair details:

Replace the CN801

3-6. Media cannot be ejected

Fault details: Media cannot be ejected.

Analysis results: CN801 (50-pin) on the MAIN PWB ASSY was pushed in during card insertion, dislodging the ejector so that the lever became disconnected and the media could not be ejected.



Repair details:

Replace the CN801

3-7. Images cannot be recorded

Fault details: Images sometimes appear completely black.

Analysis results: Shutter curtain operation error causes completely black images.

Repair details:

Replace the CAMERA BODY

3-8. Recorded images are completely black

Fault details: Recorded images are completely black.

Analysis results: The camera takes pictures normally but the recorded images are completely black. Live images are shown vertically.



Repair details:

Replace the CCD UNIT

3-9. Noise (distortion) appears in recorded images

Fault details: Noise (distortion) appears in recorded images.

Analysis results: Replacing the CCD restored normal camera operation.



Repair details:

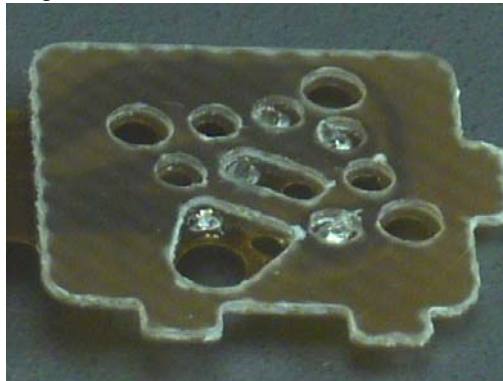
Replace the CCD

4. Operation

4-1. Remote release does not work

Fault details: Remote release does not work.

Analysis results: The remote release plug was rotated forcibly while plugged into the camera, turning both the plug and the plug locking screw and breaking off the terminals.



Repair details:

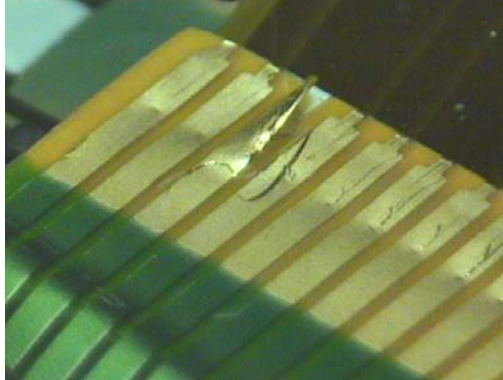
Replace the remote release

5. LCD

5-1. Text LCD does not display

Fault details: Text LCD does not display.

Analysis results: A flexible cable terminal for the rear display panel was bent upwards.



Repair details:

Replace the LCD

5-2. Dead pixels in the LCD

Fault details: Dead pixels in the LCD.

Analysis results: Defect in the LCD monitor pixel elements.

Repair details:

Replace the LCD

5-3. LCD monitor cracked

Fault details: LCD monitor cracked.

Analysis results: Damaged due to external pressure.



Repair details:

Replace the Monitor Window and LCD

6. Operation

6-1. USB connector dislodged

Fault details: USB connector dislodged.

Analysis results: Soldering defect in connector CN400.

Repair details:

See Bulletin GS-2005-038

6-2. IEEE 1394 communication fails

Fault details: IEEE 1394 communication fails.

Analysis results: Because the cable was connected to the IEEE 1394 connector in the wrong direction, the connector became loose and communication errors occurred.



Repair details:

Replace the MAIN PWB ASSY



FUJI PHOTO FILM CO., LTD.
26-30, Nishiazabu 2-chome, Minato-ku, Tokyo 106-8620, Japan.