

作成承認印

配布許可印



# AF Nikkor 35mm f/2 D

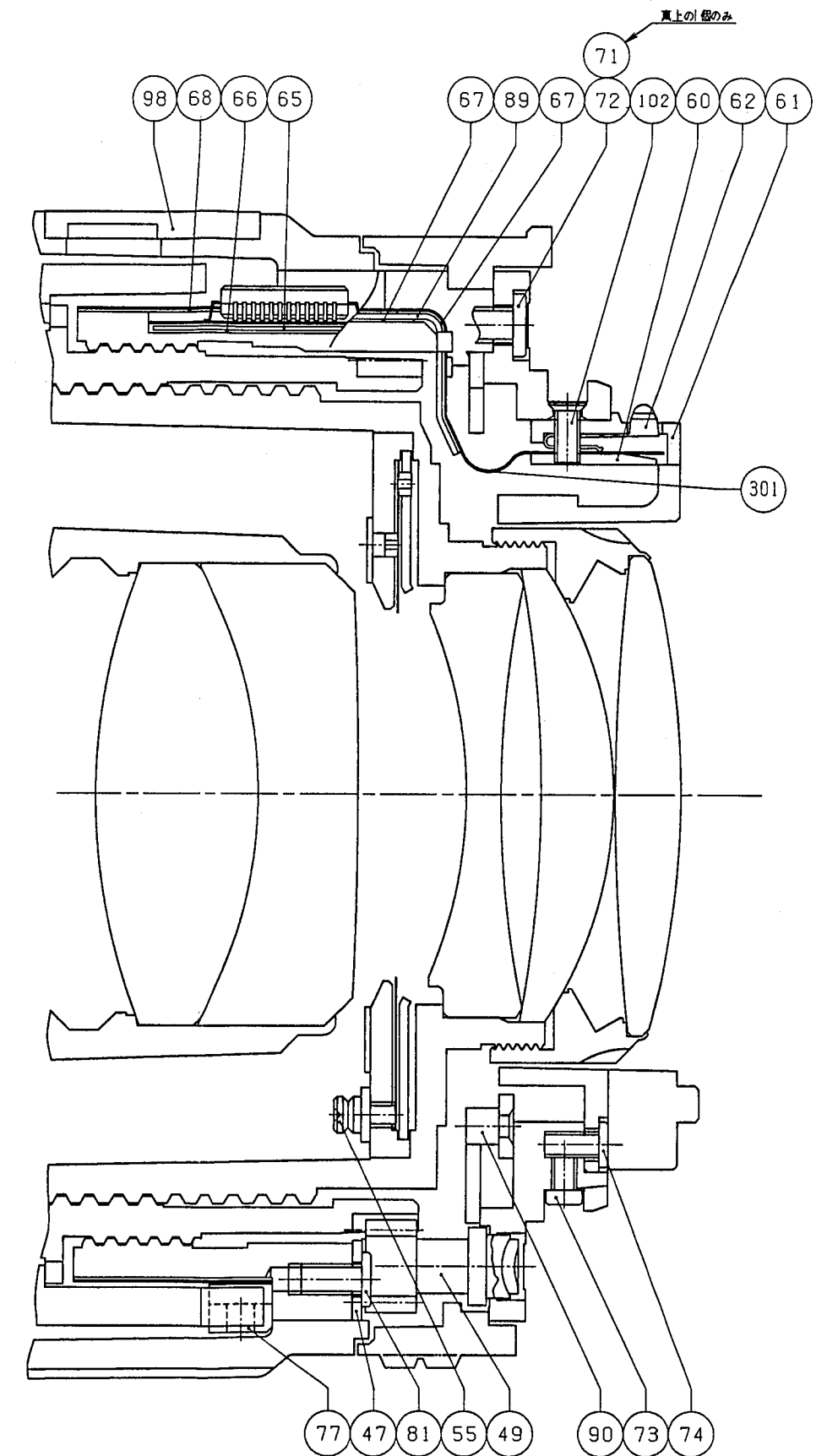
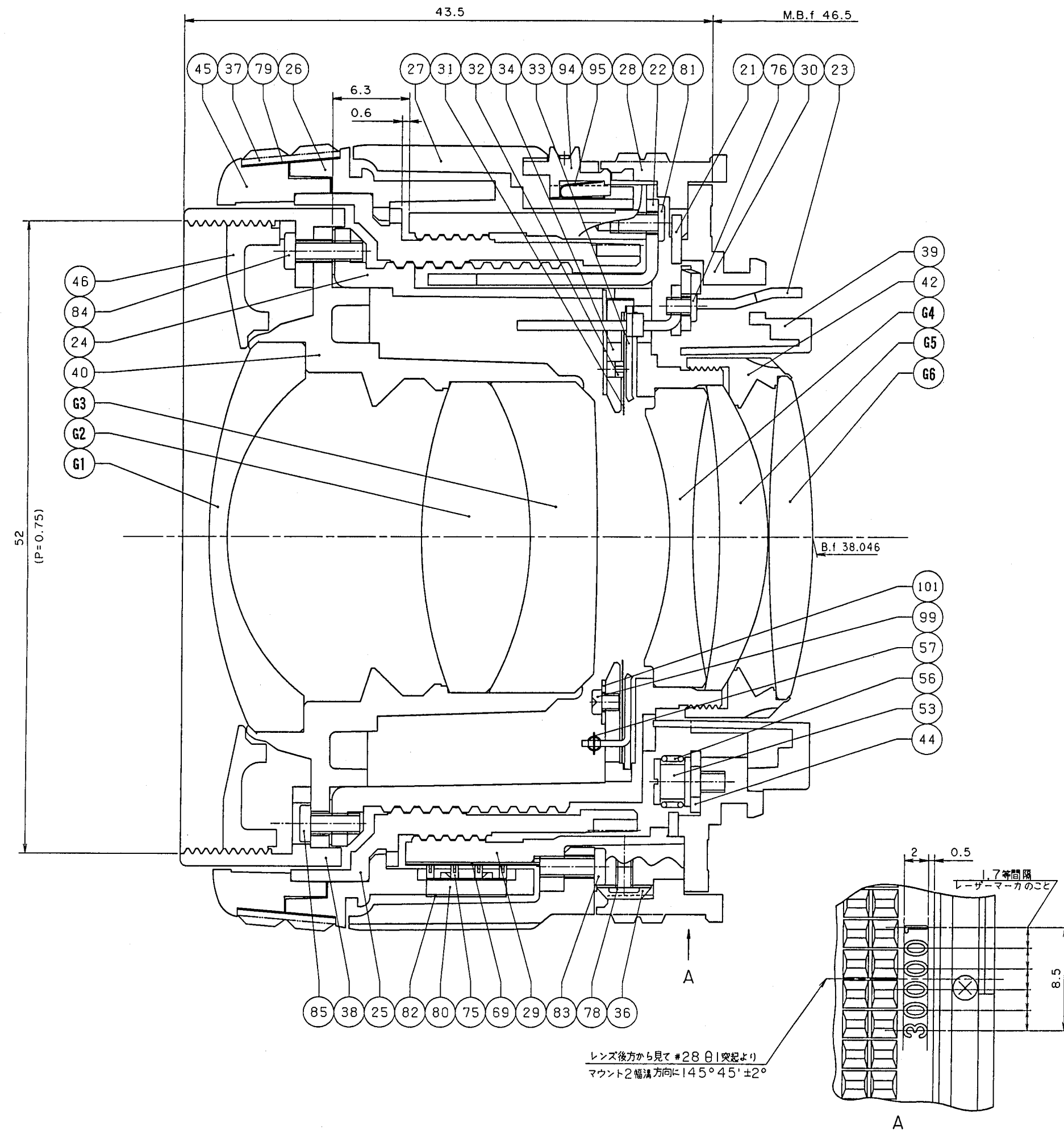


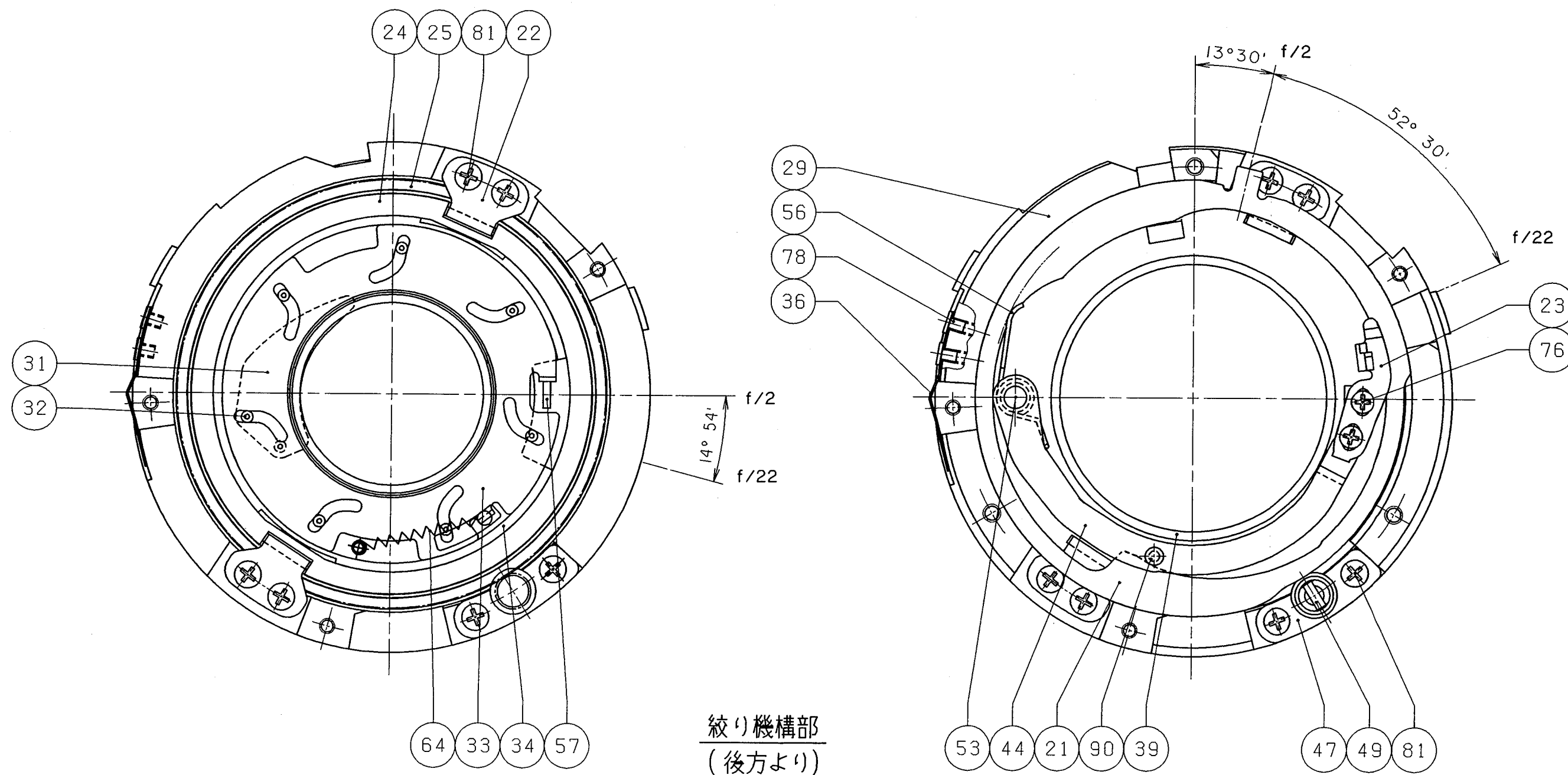
REPAIR MANUAL

修 理 指 針

**Nikon** | NIKON CORPORATION  
Tokyo, Japan

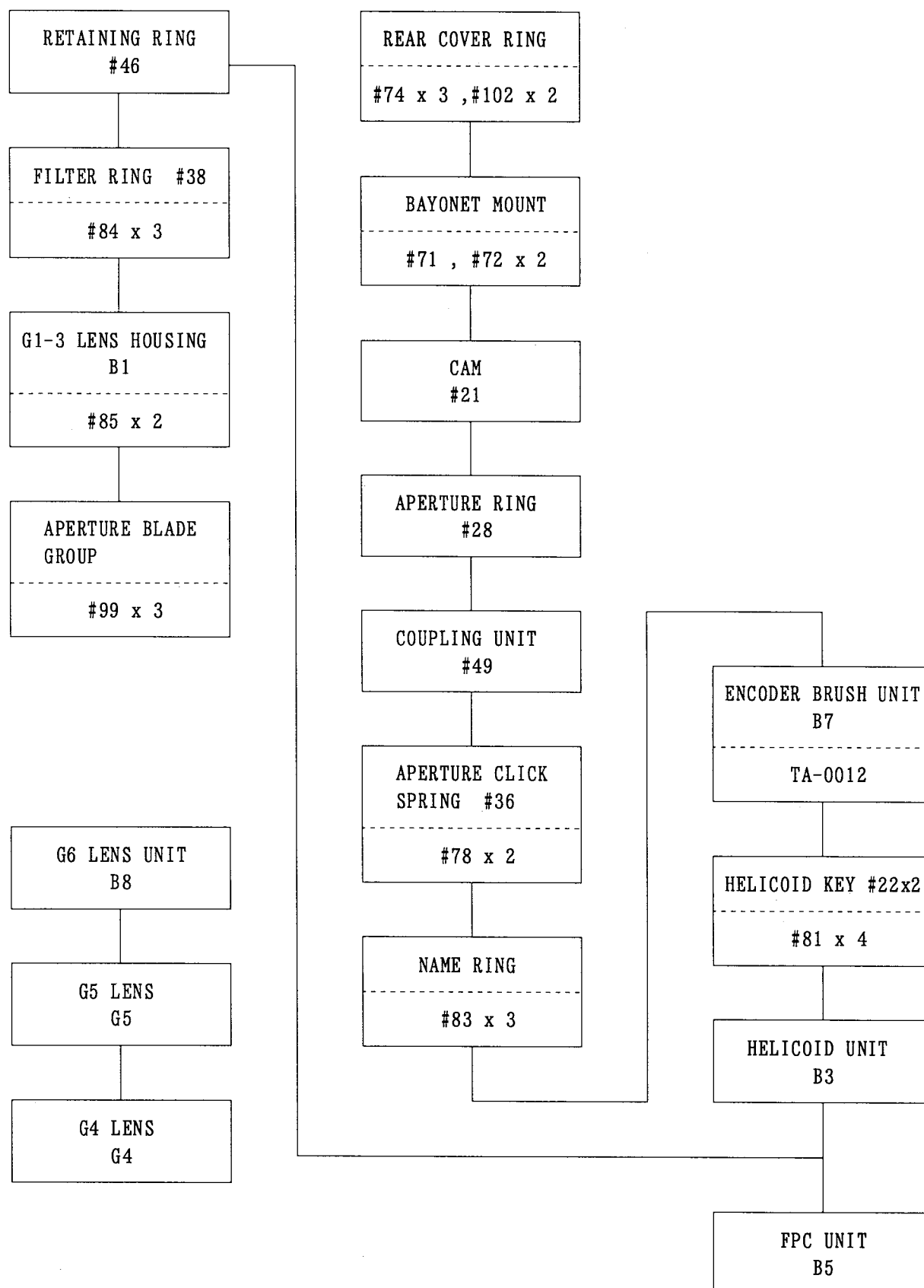
© Copyright 1995  
ALL RIGHTS RESERVED





## DISASSEMBLING/ASSEMBLING/ADJUSTMENT

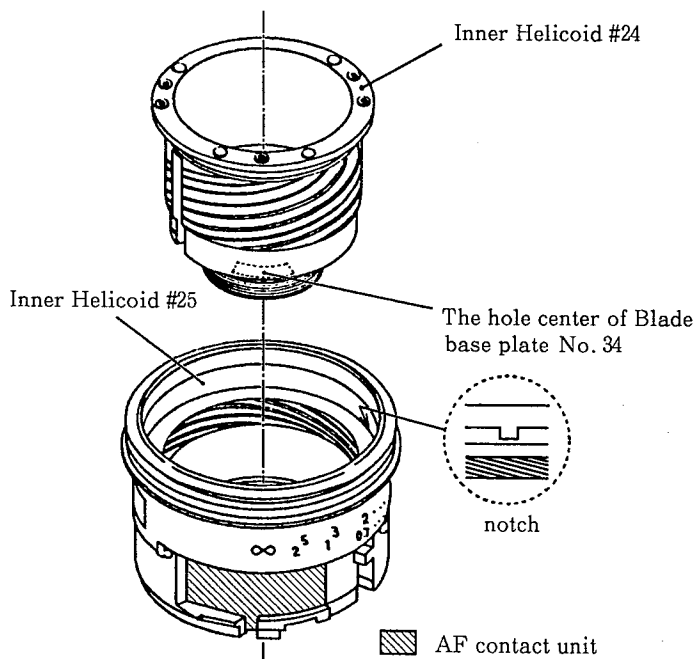
## 1. DISASSEMBLING PROCEDURE



Note : The following explanation states only the different points from the repair method of JAA12201 (AF 35mm f/2) .

Regarding other methods of "Disassembling, Assembling, and Adjustment" , please refer to the Repair Manual for JAA12201 (AF 35mm f/2) .

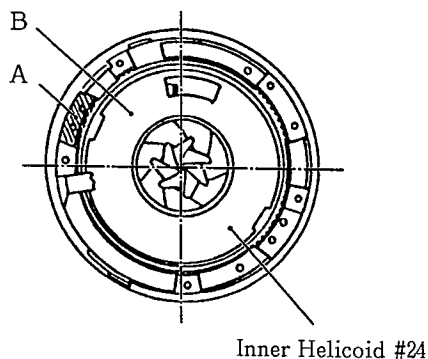
## HELICOID



① Set the Focus Ring to the position  $\infty$ , install the Inner Helicoid No. 25 to the utmost depth.

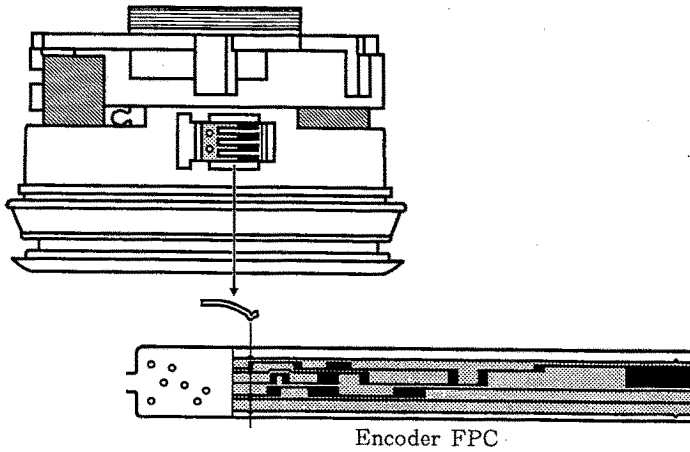
② After assembling Inner Helicoid No. 25, turn it back  $180^\circ$ . Set the Helicoid No. 25 so as to stop its notch at the position  $90^\circ$  on right side.

③ Adjust the position of mark " $\infty$ " of Focus Ring and the hole center of Blade base plate No. 34 of Inner Helicoid No. 24, and assemble them. (Refer to the left drawing.)



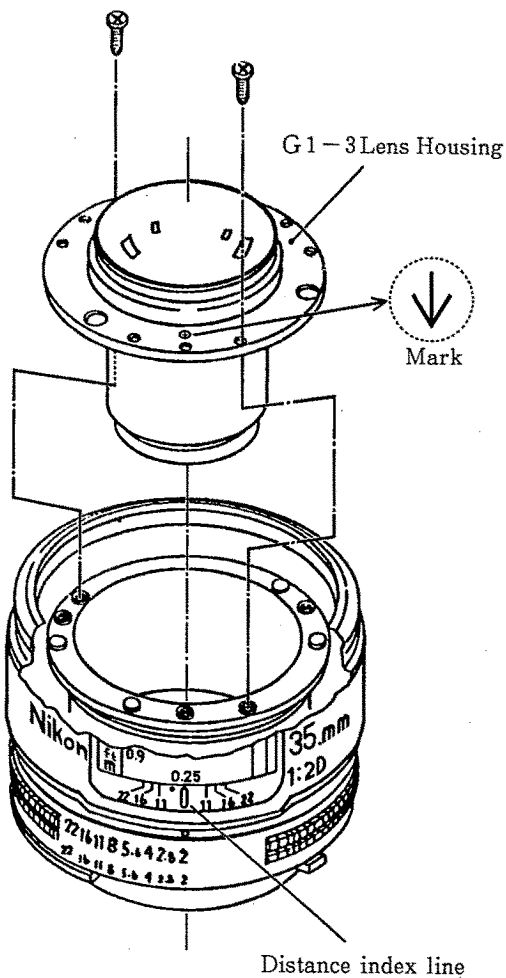
• Confirm that the A face and B face are the same height.

## ADJUSTMENT OF ENCODER BRUSH POSITION



- When you lay the Focus Ring to the infinity limit, set up the brush so that its end round portion stops at the place as described left.

## G1-3 LENS HOUSING



- Adjust the mark "Ⓢ" on the G1-3 Lens Housing and the Distance index line of Name Ring, and then assemble them.

However, the products of early manufacturing period have errors to some extent.

## INSPECTION OF ENCODER SIGNAL

※ Use an F90(N90) camera body and checking & adjustment programs for F90/N90 to display encoder signal on the computer monitor when making an inspection.

**Inspection method**

- Start the checking & adjustment programs for F90/N90 and select " E.Checking of AF lens communication ". Make inspection according to instructions as shown on the display.
- Encoder signals should be as described in the table below when the distance scale is set to specified positions.

Distance scale position	Encoder signal		
	1	2	3
Most infinity position	4 6 h	F D h	4 6 h
2 m	4 6 h	A D h	4 6 h
1 m	4 6 h	E C h	4 6 h
Most close distance position	4 6 h	0 6 h	4 6 h

- ◎ If encoder signal values are different from those shown in the table, following causes must be considered.  
 Distance brush is mounted in the wrong position, distance brush or FPC is defective, encoder patterns on the FPC are contaminated, or the FPC is fixed in the wrong position.